

HYTORC

WEST



**HYDRAULIC AIR & ELECTRIC
TORQUE SYSTEMS
WITH 24 HOUR
CUSTOMER SUPPORT & SERVICE**

★★★★★
**MADE IN THE
USA**

MXT PLUS HYDRAULIC TORQUE WRENCH



MORE THAN ALL OTHERS

1. Drive (Coaxial) Reaction Arm
2. HYTORC Nut Direct Drive
3. HEX Direct Drive
4. ALCO Arm
5. Drive (Coaxial) Reaction Arm Tightening
6. Track Pad Fixture
7. HYTORC Washer Driver
8. Rear Reaction Arm
9. Rear Reaction Sleeve 3" Down
10. Rotatable Reaction Arm

AND SO MUCH MORE...

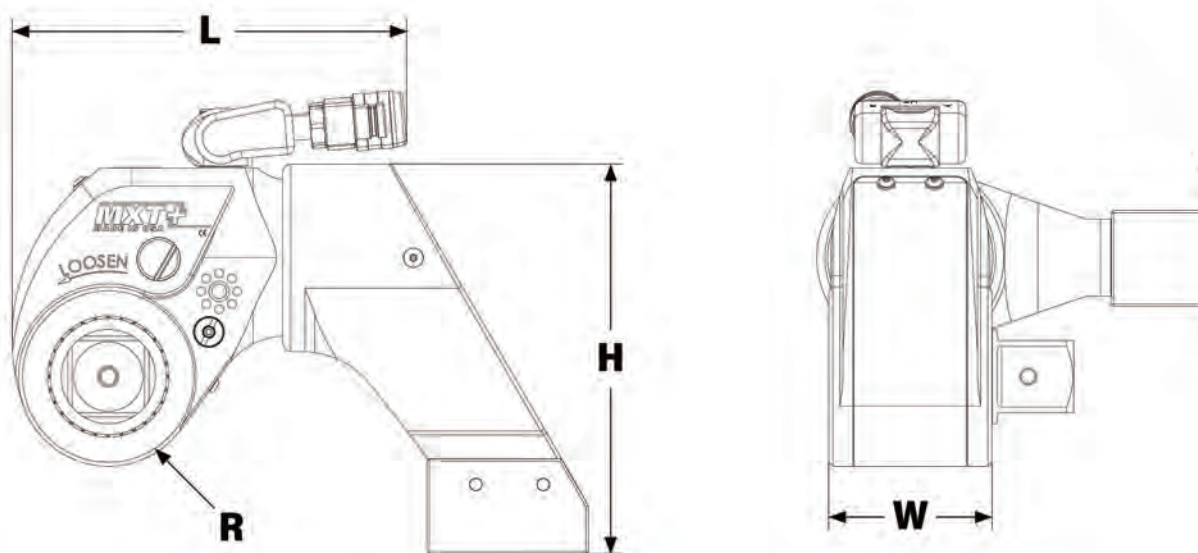


The **MXT+** Hydraulic Torque Wrench from HYTORC combines the best of the original MXT with the latest advances in bolting technology including coaxial reaction drive, auto-release feature and a new cycle counter. The **MXT+** is constructed from higher strength materials for rugged industrial use and highly repeatable performance. The coaxial drive reaction combined with rear reaction feature provides flexibility to configure the tool in the field. Eliminating the need for two separate tools. Compatible with standard sockets and now equipped with coaxial drive technology to support the HYTORC Washer and HYTORC Nut systems. Integrated auto-release and new quick-couplers provide faster job setup and completion. The new cycle counter helps keep tools in calibration, allowing users to schedule preventative maintenance for maximum performance and longer tool life.

24 Hour Service - 208.648.0897

MXT PLUS

2



LEGEND: H = HEIGHT W = WIDTH L = LENGTH R = RADIUS

MODEL NUMBER	H	W	L	R	DRIVE	WEIGHT	TORQUE	
	IMPERIAL (in.)					lbs.	MIN (ft.-lbs.)	MAX (ft.-lbs.)
MXTP - 01	6.38	2.18	5.17	2.60	3/4	6.80	200	1,340
MXTP - 03	8.10	2.90	6.66	1.50	1	7.59	480	3,230
MXTP - 05	9.24	3.38	8.04	1.86	1-1/2	18.50	835	5,590
MXTP - 10	11.69	4.35	10.05	2.38	1-1/2	25.00	1755	11,520
MODEL NUMBER	METRIC (mm)				in.	kg	MIN (Nm)	MAX (Nm)
	H	W	L	R				
MXTP - 01	162	55	131	30	3/4	3,08	271	1816
MXTP - 03	206	74	169	38	1	3,44	650	4377
MXTP - 05	235	86	204	47	1-1/2	8,39	1131	7575
MXTP - 10	297	110	255	60	1-1/2	11,33	2478	15610

DUAL REACTION



The **MXT+** dual-reaction feature allows the user to configure the wrench for rear reaction arms compatible with the original MXT or newer reaction arms compatible with AVANTI and ICE product lines.

EMBEDDED CYCLE-COUNTER



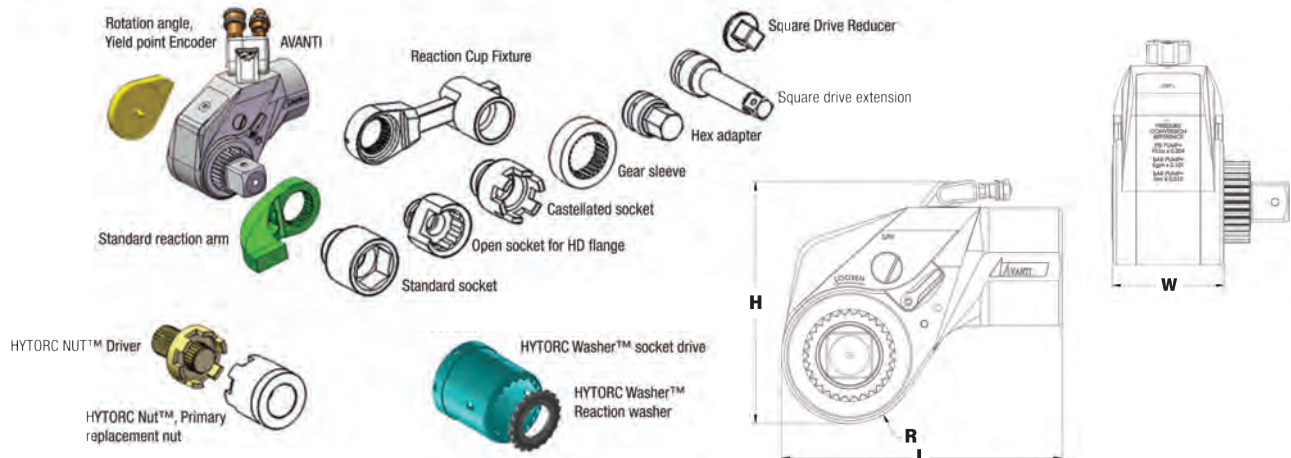
The **MXT+** has an embedded cycle counter to monitor tool use and schedule preventative maintenance and calibration. This feature helps maintain the tool at peak performance for accurate and repeatable bolting results. By providing preventative maintenance the user can achieve the longest tool life possible.

AUTO-RELEASE



The **MXT+** Wrench has an integrated auto release feature so the operator doesn't have to flip a lever to un-lock the tool from the applications. Simply advance the pump and the tool will free itself making bolting operations faster, safer, and simpler.

AVANTI



LEGEND: H = HEIGHT W = WIDTH L = LENGTH R = RADIUS

MODEL NUMBER	H	W	L	R	DRIVE	WEIGHT	TORQUE	
	IMPERIAL (in.)					lbs.	MIN (ft.-lbs.)	MAX (ft.-lbs.)
AVANTI - .7	4.19	1.79	4.14	0.99	0.75	3.10	115	767
AVANTI - 1	4.76	2.18	4.71	1.13	0.75	4.50	196	1,284
AVANTI - 3	6.20	2.90	6.15	1.52	1.00	9.45	460	3,084
AVANTI - 5	7.14	3.38	7.36	1.80	1.50	15.60	804	5,360
AVANTI - 8	7.90	3.86	8.24	1.94	1.50	20.75	1,150	7,760
AVANTI - 10	8.85	4.35	9.20	2.25	1.50	29.20	1,800	11,743
AVANTI - 20	10.22	5.07	10.94	2.60	2.50	47.70	2,760	17,890
AVANTI - 35	12.22	6.23	13.45	3.19	2.50	82.75	4,905	31,830
AVANTI - 50	13.90	7.04	15.54	3.95	2.50	127.70	7,202	46,126
AVANTI - 80	16.84	7.49	19.52	4.69	3.50	280.50	11,965	85,695
AVANTI - 130	19.40	8.50	22.73	5.31	3.50	585.00	19,395	138,510

JETPRO S AIR

This economically priced air-powered hydraulic power pack combines industry-leading reliability with lightweight design.

AIR CONSUMPTION:

1900 cu. in/sec

DATA RECORDING:

NO

GAUGE

0-10K PSI (+/- 1% Acc.)

RESERVOIR CAPACITY

0.8 gal.

STAGES

2

MAX FLOW RATE

370 cu. in/min

WEIGHT

35 lbs



HY-AIR

HYTORC's innovative air-powered hydraulic pumps are the most reliable pneumatic pumps on the market. These systems are ideal for use within explosive environments or in areas where electricity is unavailable through the use of a portable air compressor.

AIR CONSUMPTION:

3800 cu. in/sec

DATA RECORDING:

NO

GAUGE

0-10K PSI (+/- 1% Acc.)

RESERVOIR CAPACITY

2 gal.

STAGES

3

MAX FLOW RATE

770 cu. in/min

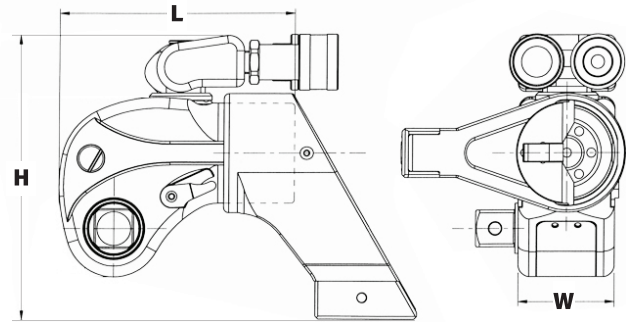
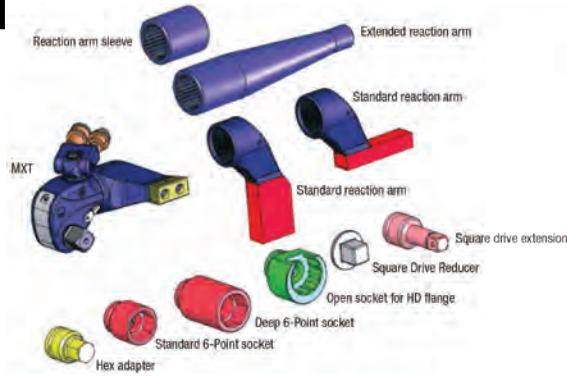
WEIGHT

46.3 lbs



24 Hour Service - 208.648.0897

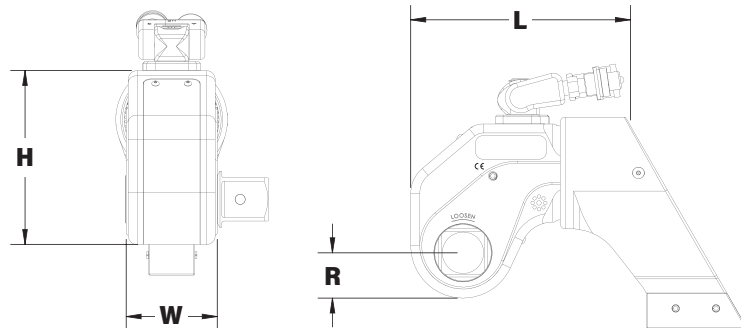
MXT



LEGEND: H = HEIGHT W = WIDTH L = LENGTH

MODEL NUMBER	H	W	L	DRIVE	WEIGHT	TORQUE	
	IMPERIAL (in.)				lbs.	MIN (ft.-lbs.)	MAX (ft.-lbs.)
MXT - .7	4.25	1.62	3.96	0.75	2.70	118	822
MXT - 1	4.90	1.97	4.88	0.75	3.95	200	1,340
MXT - 3	6.12	2.63	6.34	1.00	8.30	480	3,230
MXT - 5	7.22	3.16	7.61	1.50	14.20	835	5,590
MXT - 10	8.80	3.95	9.51	1.50	24.80	1,755	11,520
MXT - 15	9.67	4.38	10.55	2.50	36.00	2,268	15,399
MXT - 20	10.24	4.73	11.41	2.50	43.40	2,960	19,760
MXT - 35	12.42	5.82	14.03	2.50	77.45	5,400	37,100

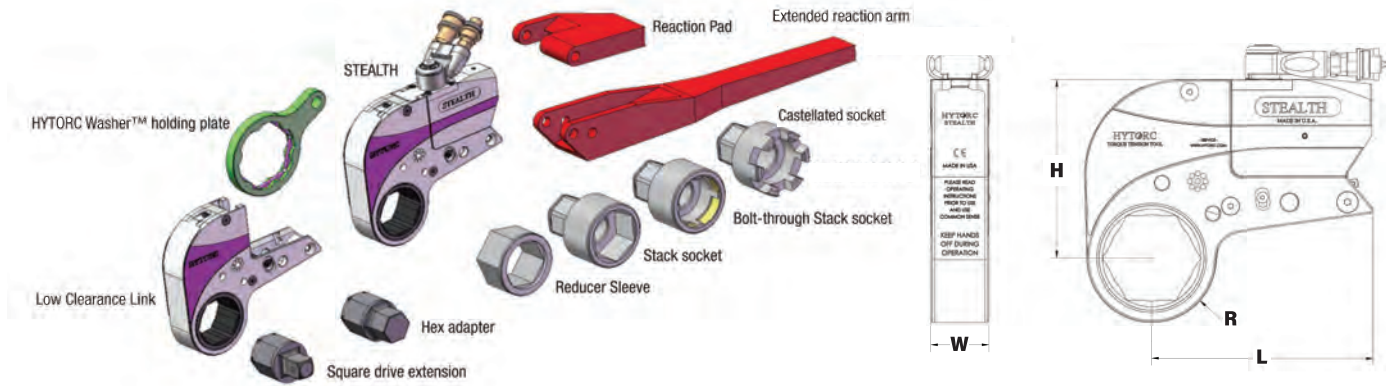
EDGE S



LEGEND: H = HEIGHT W = WIDTH L = LENGTH R = RADIUS

MODEL NUMBER	H	W	L	R	SQUARE DRIVE	WEIGHT	TORQUE	
IMPERIAL	in.					lbs.	ft-lbs (Min)	ft-lbs (Max)
EDGE-1S	3.53	1.97	4.94	0.97	3/4	4.05	178	1,257
EDGE-3S	4.71	2.63	6.40	1.31	1	8.50	443	3,097
EDGE-6S	6.04	3.18	7.61	1.57	1-1/2	19.20	893	6,241
EDGE-9S	6.58	3.57	8.59	1.86	1-1/2	20.05	1,230	8,555
EDGE-11S	7.07	3.95	9.60	1.96	1-1/2	25.00	1,615	11,291
EDGE-30S	10.10	5.64	13.71	2.79	2-1/2	64.70	4,448	29,650
METRIC	mm				in.	kg	Nm (Min)	Nm (Max)
EDGE-1S	90	50	125	25	3/4	1.84	241	1703
EDGE-3S	120	67	163	33	1	3.86	600	4172
EDGE-6S	153	81	193	40	1-1/2	8.73	1210	8457
EDGE-9S	167	91	221	47	1-1/2	9.11	1667	11592
EDGE-11S	180	100	244	50	1-1/2	11.36	2188	15299
EDGE-30S	257	143	348	71	2-1/2	29.41	6027	40194

STEALTH



LEGEND: H = HEIGHT W = WIDTH L = LENGTH R = RADIUS

MODEL NUMBER	H	W	L	R	WEIGHT	TORQUE	
						MIN (ft.-lbs.)	MAX (ft.-lbs.)
STEALTH - 2	4.21	1.25	5.53	1.03 - 1.76	4	278	1,869
STEALTH - 4	5.43	1.66	6.56	1.33 - 2.32	4.30	604	4,020
STEALTH - 8	6.40	2.18	8	1.77 - 2.89	6.70	1,199	7,984
STEALTH - 14	7.94	2.50	9.35	2.32 - 3.47	10.40	2,105	14,255
STEALTH - 22	9.18	2.91	10.80	2.62 - 3.87	15.40	3,250	21,875
STEALTH - 36	10.81	3.41	12.71	3.07 - 4.80	24.10	4,917	34,722

JETPRO-S-115/230

The reliable and affordable solution for industrial jobs using tools up to 10,000 ft.-lbs.

VOLTAGE:

115V / 230V

DATA RECORDING:

NO

GAUGE

0-10K PSI (+/- 1% Acc.)

RESERVOIR CAPACITY

0.8 gal

STAGES

2

MAX FLOW RATE

310 cu. in/min

WEIGHT

33 lbs

AMPERAGE

12 AMP(115V) 6 AMP (230V)



HY-115/230/380-460V

HYTORC standard Electric power packs. Reliable, efficient and economical, the HY115/230 will outperform any standard pump on the market.

VOLTAGE:

115V / 230V / 400V

DATA RECORDING:

NO

GAUGE

0-10K PSI (+/- 1% Acc.)

RESERVOIR CAPACITY

1.35 gal.

STAGES

3

MAX FLOW RATE

620 cu. in/min

WEIGHT

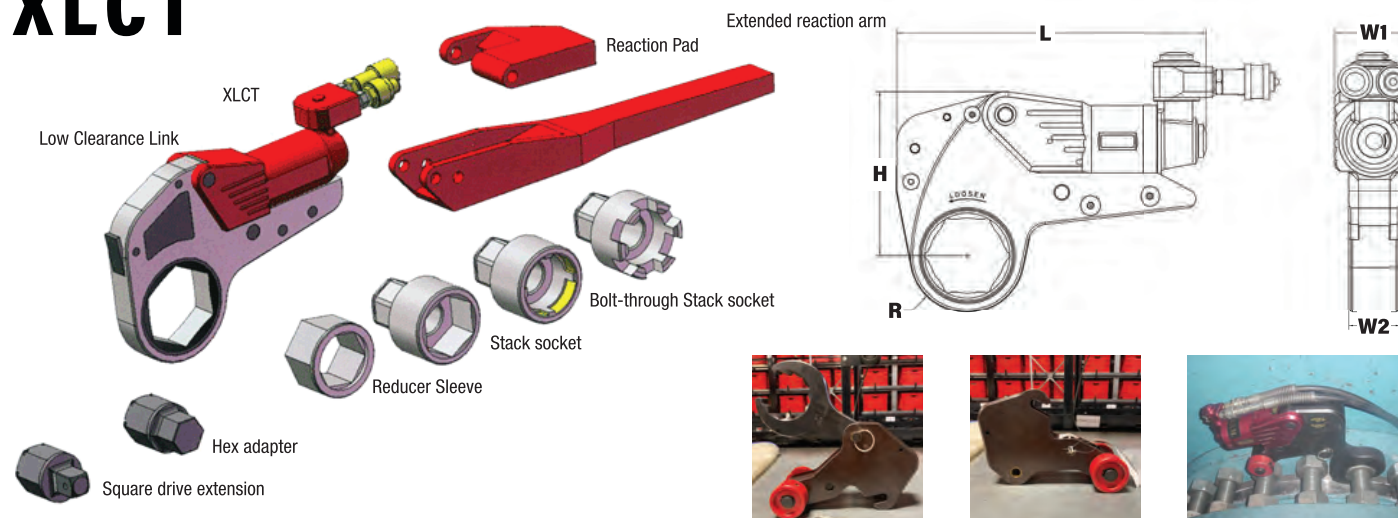
57 lbs

AMPERAGE

15 AMP(115V) 7 AMP (230V)



XLCT



LEGEND: H = HEIGHT W1 = WIDTH OF POWERHEAD W2 = WIDTH OF LINK L = LENGTH R = RADIUS

MODEL NUMBER	H	W1	W2	L	R	WEIGHT	TORQUE	
	IMPERIAL (in.)					lbs.	MIN (ft.-lbs.)	MAX (ft.-lbs.)
XLCT - 2	4.02	2.00	1.25	7.33	1.03 - 1.76	2.05	243	1,687
XLCT - 4	5.36	2.58	1.67	10.19	1.33 - 2.32	4.25	580	3,855
XLCT - 8	6.70	3.23	2.09	12.29	1.77 - 2.89	7.15	1,143	8,151
XLCT - 14	8.04	3.88	2.50	14.61	2.32 - 3.47	11.30	2,010	13,400
XLCT - 18	9.08	4.38	2.83	14.34	2.62 - 3.87	14.85	2,790	19,100
XLCT - 30	10.71	5.17	3.35	16.82	3.07 - 4.80	23.80	4,579	30,986
XLCT - 45	13.39	6.00	3.94	21.10	4.05 - 4.88	43.00	7,130	49,180
XLCT - 60	13.39	6.46	4.16	20.70	4.81 - 5.03	48.00	8,867	59,110

VECTOR

The world's most advanced hydraulic power pack. The first pump to offer LCD pendant control and automated regulation, HYTORC is taking industrial bolting to the next level. With the Vector Series pumps, industrial bolting has become more intuitive and smarter than ever before.

VOLTAGE:

115V / 230V / 400V

DATA RECORDING:

YES

RESERVOIR CAPACITY

2 gal.

STAGES

3

MAX FLOW RATE

620 cu. in/min

WEIGHT

79 lbs

AMPERAGE

18 AMP(115V) 9 AMP (230V)



BIGJET 18-3A - 50-60HZ

The highest performance pump designed to get the most efficiency from larger hydraulic powered bolting systems.

VOLTAGE:

380 - 460V

DATA RECORDING:

NO

GAUGE

0-10K PSI (+/- 1% Acc.)

RESERVOIR CAPACITY

2 gal.

STAGES

3

MAX FLOW RATE

1070 cu. in/min

WEIGHT

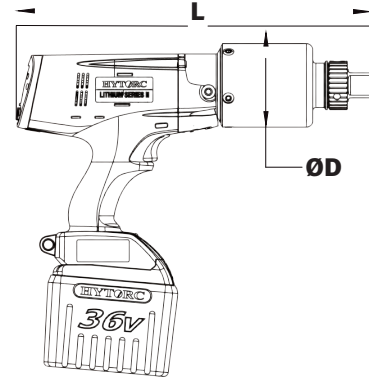
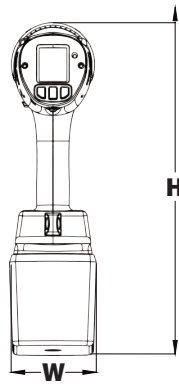
64 lbs

AMPERAGE

6 AMP



LST BATTERY GUN



LEGEND: H = HEIGHT W = WIDTH L = LENGTH ØD = DIAMETER

CONFIGURATIONS	H	W	L	D	DRIVE	WEIGHT W/ BATTERY	SNUG		TORQUE	
IMPERIAL	in.					lbs.	ft-lbs (Min)	ft-lbs (Max)	ft-lbs (Min)	ft-lbs (Max)
LST-0700	12.9	3.5	11.4	2.6	3/4	11.7	35	149	150	700
LST-1200	12.9	3.5	11.7	2.6	3/4	12.0	60	199	200	1,200
LST-2000	13.2	3.5	13.9	3.2	1	16.6	100	324	325	2,000
LST-3000	13.3	3.5	14.4	3.4	1	17.7	150	499	500	3,000
LST-5000	16.6	4.0	15.4	4.0	1-1/2	22.4	200	799	800	5,000
METRIC	mm				in.	kg	Nm (Min)	Nm (Max)	Nm (Min)	Nm (Max)
LST-0700	328	89	290	66	3/4	5.3	47	202	203	949
LST-1200	328	89	297	66	3/4	5.5	81	270	271	1627
LST-2000	335	89	353	81	1	7.5	135	439	440	2712
LST-3000	338	89	366	86	1	8.0	203	676	677	4067
LST-5000	422	102	391	102	1-1/2	10.2	270	1083	1085	6779

TorcSense™ Technology



A direct torque measurement system utilizing a strain based transducer in a closed loop monitoring system provides more repeatable torque and enables advanced bolting features.

BRUSHLESS 36V DC MOTOR



The tool uses an all new 36V brushless DC motor which runs cooler, quieter, and has significantly longer life.

INTUITIVE USER INTERFACE



The home screen and menu structure have been redesigned with all new icons, indicators, and simple navigation layout making the tool intuitive and simple to use.

DIGITAL JGUN



LEGEND: H = HEIGHT W = WIDTH L = LENGTH R = RADIUS



MODEL NUMBER	H	W	L	R	DRIVE	WEIGHT	TORQUE	
							IMPERIAL (in.)	
							lbs.	MIN (ft.-lbs.) MAX (ft.-lbs.)
DJ - .25	7.87	3.15	7.92	2.50	3/4	8.25	60	250
DJ - .5	7.87	3.15	8.94	2.58	3/4	8.85	185	500
DJ - 1	7.87	3.15	9.74	2.58	3/4	9.80	350	1,175
DJ - 2	8.41	3.37	11.90	3.25	1	16.50	575	2,090
DJ - 3	8.41	3.37	12.57	3.25	1	17.70	856	3,180
DJ - 5	8.72	3.37	14.04	4.15	1-1/2	28.30	1,395	5,050
DJ - 8	8.93	3.37	15.10	4.56	1-1/2	38.40	2,300	7,900

DIGITAL READOUT



The jGun DIGITAL is the world's first torque-adjustable pneumatic multiplier with a digital readout and FRL-free operation. Unlike other systems that require a separate filter, regulator and lubrication system, the patented design of the jGun DIGITAL eliminates the need for this add-on for the highest level of portability and convenience.

BUILT-IN TORQUE ADJUSTMENT



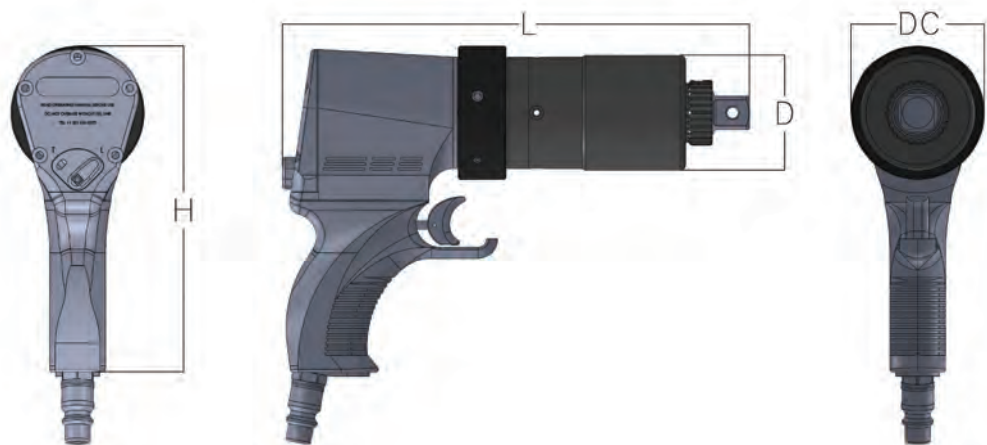
The jGun DIGITAL is the first of its kind with an onboard air regulator for simple torque adjustment with a twist of the connector at the bottom of the handle. Especially convenient when switching from tightening to loosening, giving you the ability to quickly adjust to full power for fast and easy break-out.

INDUSTRIAL-GRADE MOTOR



The new motor featured in the jGun DIGITAL is a workhorse designed for heavy industrial use. With maximum power-to-weight ratio and a rugged corrosion-resistant design, this motor eliminates the need for separate air filters and lubrication systems, making the jGun DIGITAL the most portable air powered torque gun on the market.

DUAL SPEED JGUN



LEGEND: H = HEIGHT D = DIAMETER DC = COLLAR DIAMETER L = LENGTH

MODEL NUMBER	H	W	L	R	DRIVE	WEIGHT	TORQUE		RPM	
	IMPERIAL (in.)					lbs.	MIN (ft.-lbs.)	MAX (ft.-lbs.)	Rundown	Final
J - A.5 - AP	7.32	8.07	2.58	2.99	3/4	9.04	194	502	465	24.0
J - A1 - AP	7.40	10.55	2.58	2.99	3/4	9.70	312	1,272	126	6.5
J - A2 - AP	8.42	12.51	3.25	4.48	1	15.00	520	2,039	97	5.0
J - A3 - AP	7.50	12.48	3.19	2.99	1	12.00	830	3,072	39	2.0
J - A5 - AP	8.42	14.65	4.15	4.48	1-1/2	22.50	1,215	5,007	48	2.5
J - A8 - AP	8.46	15.38	4.56	4.48	1-1/2	28.75	2,079	8,285	29	1.5

WHEEL GUN ACCESSORY



The Wheel Gun Accessory is the obvious choice for wheel bolting and all nuts and bolts in confined spaces. The powerful extension system delivers the desired torque without compromise to power or durability. With industry-leading repeatability and intuitive design, job integrity is always assured.

3-IN-1 BOLTING SYSTEM



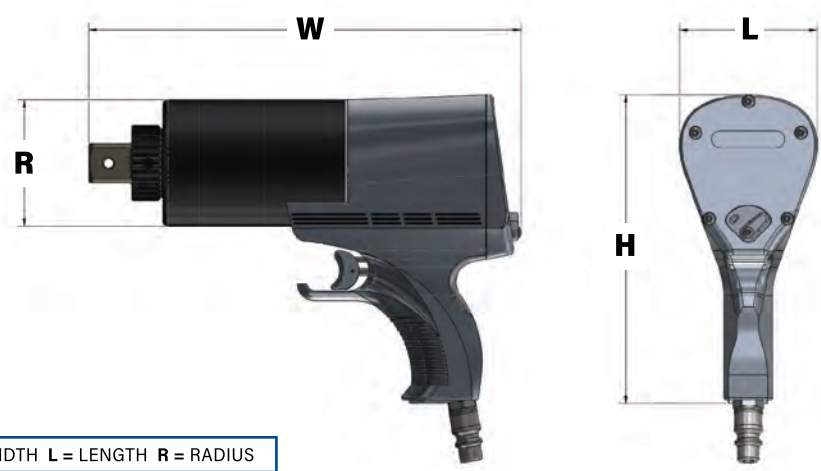
A simple twist of the collar switches the tool from high speed rundown mode into the max power mode with adjustable torque so you can choose the right output for your job.

INTUITIVE DESIGN



This robust tool eliminates the need for multiple systems making training simpler and reducing the chance for operator error. When multiple systems are used to assemble a bolted joint there is more chance for operator error. The jGun DUAL SPEED makes the job simpler by giving operators one easy to use system that can be used from start to finish.

SINGLE SPEED JGUN



LEGEND: H = HEIGHT W = WIDTH L = LENGTH R = RADIUS

MODEL NUMBER	H	W	L	R	DRIVE	WEIGHT	TORQUE		RPM
							IMPERIAL (in.)	lbs.	
							MIN (ft.-lbs.)	MAX (ft.-lbs.)	
J - .25	7.32	2.74	7.03	2.50	3/4	7.20	48	250	65.0
J - .5	7.32	2.74	8.07	2.58	3/4	7.20	129	508	24.0
J - 1	7.32	2.74	8.90	2.58	3/4	10.00	301	1231	6.5
J - 2	7.94	3.53	10.46	3.25	1	14.50	521	2190	5.5
J - 3	7.94	3.53	11.11	3.25	1	15.74	852	3104	5.0
J - 5	8.25	4.15	12.68	4.15	1-1/2	20.05	1150	5266	2.5
J - 8	8.46	4.56	13.90	4.56	1-1/2	26.50	1743	7924	1.5

POWERFUL BREAKOUT



The jGun SINGLE SPEED provides continuous power with no kickback to break out the nuts that other systems can't tackle. Impact guns have tremendous vibration and noise and have been banned on many job sites. It uses precision gearing and a simple reaction fixture to give you maximum power without the noise and vibration.

REPEATABLE TORQUE



For maximum joint integrity, all of the bolts on a connection need to have an even and accurate load. The jGun SINGLE SPEED provides adjustable and repeatable torque to ensure that the bolted joint is assembled right the first time and keeps the torque over time.

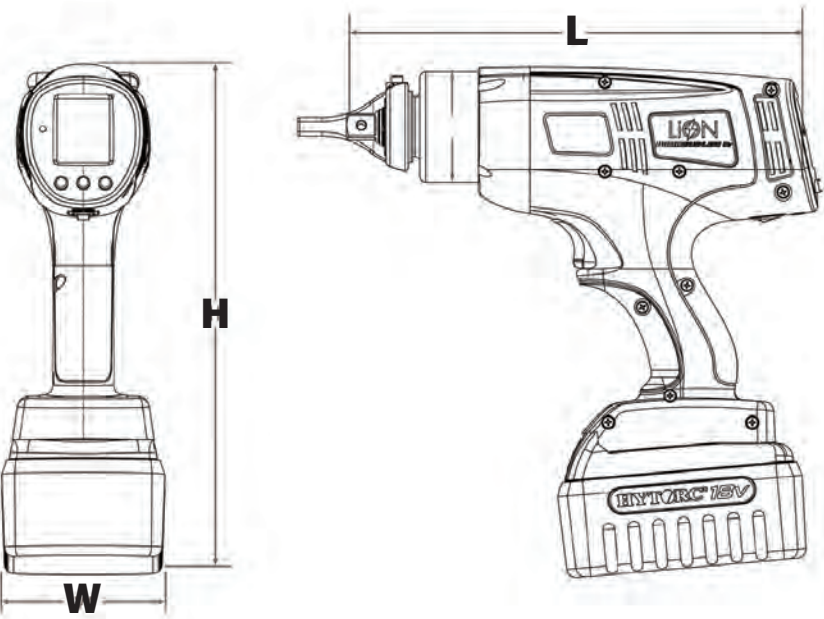
ERGONOMIC DESIGN



The jGun SINGLE SPEED is built using aerospace materials for lightweight design with maximum durability. The comfort grip and available silencer ensure that the tool operator is comfortable, even on all-day jobs.

LION GUN

J1-WG-EXTRF-7-DW



HY.7-WG-EXT4-33MM-RTC

LEGEND: H = HEIGHT W = WIDTH L = LENGTH R = RADIUS

CONFIGURATION	H	W	L	D	SQUARE DRIVE	WEIGHT	TORQUE		RPM
IMPERIAL	in.					lbs.	ft-lbs (Min)	ft-lbs (Max)	
LIONGUN-.25 -BSM	10.83	3.47	10.16	2.35	1/2	7.30	25	250	11.6
LIONGUN-.7 -BSM	10.83	3.47	11.13	2.45	3/4	8.22	70	700	4.1

INDUSTRIAL-GRADE POWER



The LION GUN's industrial-strength gear box is driven by a brushless DC motor connected to a non-impacting gearbox to deliver torque faster, smoother and more reliably than manual clicker wrenches, impact wrenches and other tightening tools.

UNMATCHED PORTABILITY



Through the use of aerospace-grade alloys, the LION GUN packs tremendous power without the weight. The 18-Volt lithium-ion battery provides long lasting operation with a quick recharge time to keep the job going.

DATA RECORDING



Built-in data recording capability allows the user to maintain a log of all completed bolting jobs. For improved quality control and accountability, the information can be saved to a PC or tablet to provide a permanent record of the work performed.

HYTORC GRIP-TIGHT NUT



Protect your commercial fleet from wheel installation related incidents with the new HYTORC GRIP-TIGHT™ Nut. The GRIP-TIGHT™ Nut is an instant upgrade for all heavy-duty truck and trailer hub piloted wheels. The patent pending GRIP-TIGHT™ Nut eliminates the influence of side loads and provides a pinch point free reaction component for applied torque. The GRIP-TIGHT™ Nut allows for controlled and safe torquing with HYTORC Electric Torque tools. Call to request a demonstration of HYTORC cordless tooling system in conjunction with the GRIP-TIGHT™ Nut.

MATERIALS



The made-in-the-USA GRIP-TIGHT™ Nut is produced from through-hardened carbon steel and each free spinning washer is made from through-hardened and tempered chrome-moly steel. The GRIP-TIGHT™ Nut geometry and coatings combine to create a consistent and efficient translation from torque to clamping force.

SPECIFICATIONS



GRIP-TIGHT™ Nuts have M22X1.5 threads, 33mm hex, 27mm height and a 46mm washer diameter. The two-piece GRIP-TIGHT™ Nuts comply with technical requirements of SAE J1965. Cross Reference PN's: 39773, 39874, 39702, M3979, 39691, 39949, 201.3013, 13-3057, E-9020, W-525, R009020, 511034, KB9020, WA075037, 20857204, 1649492C1, E6HZ-1120-A, MF110343, and MF111026.

TOOLING



GRIP-TIGHT™ Nuts can be torqued and loosened with common impact guns and wrenches. The patent pending washer profile includes a special geometry for rotationally coupling to the HYTORC reaction socket. This washer acts as a coaxial reaction point, thereby eliminating pinch points and removing undesirable side loads. These benefits make it feasible to upgrade to cordless digital tooling systems while increasing the efficiency, quality and safety of wheel nut installations.

MANUAL TORQUE WRENCH

CLICKER WRENCH



The HYTORC Clicker Wrench is a simple and convenient tool for tightening nuts to specification in a wide range of bolting applications. This micro-adjustable torque wrench is available in various drive sizes and torque capacities. Handles are lightly knurled for a tough, non-slip grip. The tool has a spring-loaded pull down Lock Ring and an easy-to-read laser-etched scale to quickly and easily set torque. The wrench also features a quick-release button for easy socket removal. The HYTORC Clicker Wrench is supplied with an ISO certified calibration certificate.

QUICK RELEASE BUTTON



RATCHET REVERSING LEVER



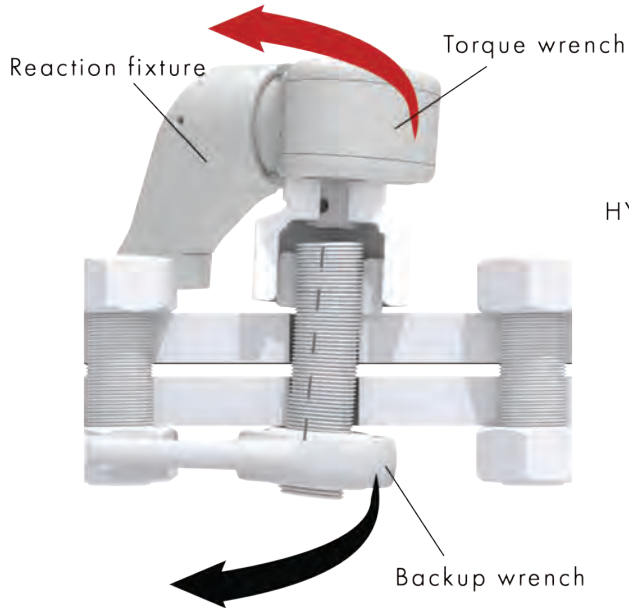
LOCK RING



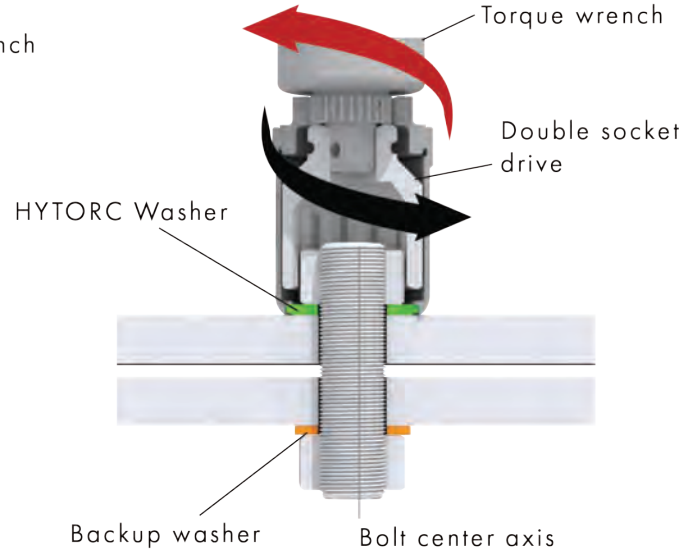
METRIC	IN.	MM				KG	SECONDARY TORQUE RANGE	INCREMENTS
MW-006-250-MRMH	3/8	286	27	24	27	0.4	4.0-27.7 Nm	.12
MW-006-1000-MRMH	3/8	406	36	30	36	1.1	19.8-110.2 Nm	.6
MW-006-100-MFRMH	3/8	406	36	30	36	1.2	16.9-132.2 Nm	.7
MW-008-150-MFRMH	1/2	483	43	36	36	1.4	34-197 Nm	1.4
MW-008-250-MFRMH	1/2	620	43	36	36	1.4	47-332 Nm	1.4
MW-010-400-MFRMH	3/4	870	64	53	36	4.7	85-525 Nm	3.4
MW-010-600-MFRMH	3/4	1067	64	51	29	5.4	169-779 Nm	6.8
MW-020-1000-MFRMH	1	1778	76	76	38	11.4	305-1322 Nm	6.8

HYTORC WASHER

STANDARD REACTION FIXTURE



HYTORC WASHER



Backup Washer

THE HYTORC WASHER IS COMPATIBLE WITH THE FOLLOWING HYTORC BOLTING SYSTEMS



LITHIUM series



ICE series



AVANTI series



STEALTH series

SAFETY



The HYTORC Washer eliminates the need for reaction arms, which are the most common cause of injury on bolting jobs. The unique design of the washer allows the double layered safety socket to react on the washer itself, while turning the nut.

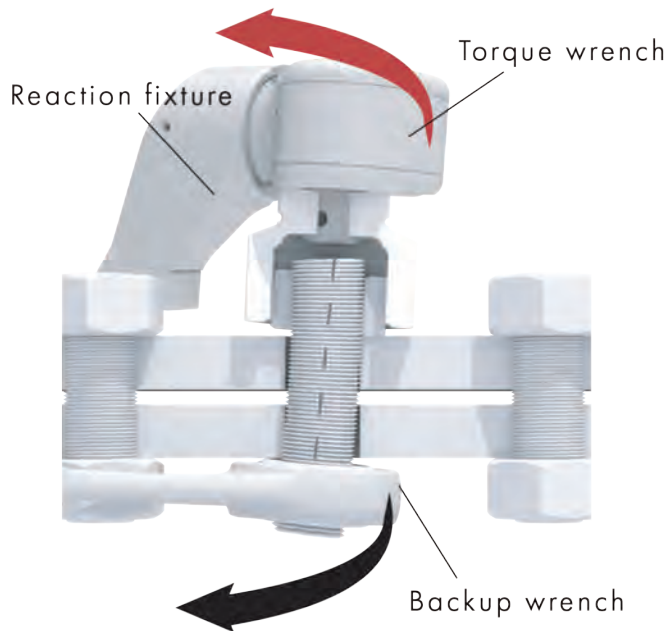
SPEED



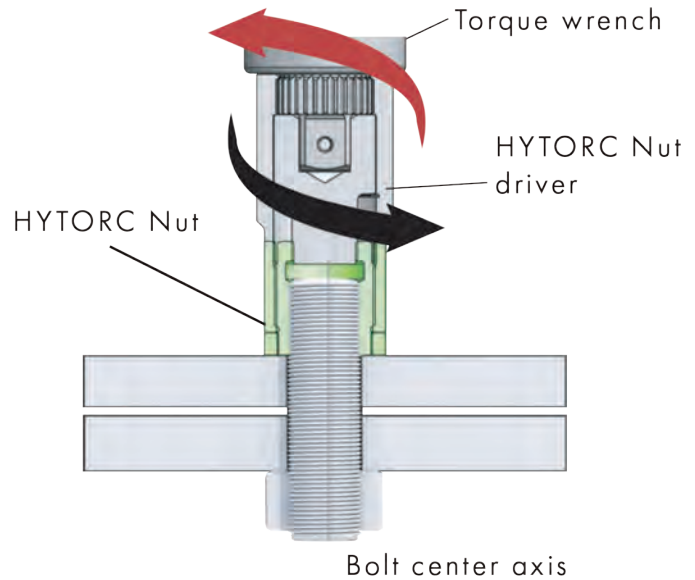
The HYTORC Washer removes the complicated setup associated with other bolting systems and makes the bolting process more intuitive for improved job times. HYTORC's patented knurling ensures against bolt rotation during any operation.

HYTORC NUT

STANDARD REACTION FIXTURE



HYTORC NUT



4 TYPES OF HYTORC NUT

CN-PRIMARY REPLACEMENT NUT



The CN line offers users the speed of regular torque with unmatched repeatability and precision.

TN-COMPACT STYLE REPLACEMENT NUT



TN Series Clamps combine durability, efficiency & the ability to fit in tight spaces.

SN-LTD. OVERHEAD CLERANCE NUT



The SN Series clamp line covers a wide range of sizes and applications, specified to overcome tight overhead restrictions.

SS-HIGH TEMP/HIGH LOAD NUT

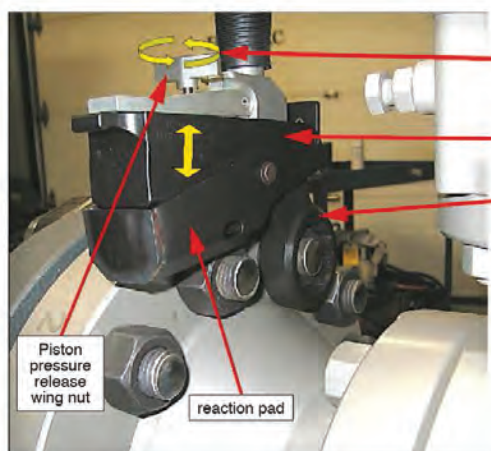


The Smart Stud's compact geometry makes it a suitable replacement for any fastener regardless of load or temperature.

ACCESSORIES

The variety of our patents, as well as awards received at Innovation and Quality Events in the USA, Europe and Japan, speaks to the high standards that HYTORC® provides.

HYTORC® focuses on our customers' individual needs. We design and manufacture special accessories for all jobs and industries. HYTORC's accessories are of the highest quality to insure job safety and efficiency.



REACTION FIXTURES

Standard & Customized Solutions for Every Type of Application.



BACK-UP WRENCHES

No more locked or falling backup wrench. Instant manual unlocking.



OFFSET LINK

Offset links for Limited Clearance. Perfect for plate heat exchangers.



EXTENSIONS

Job Specific and Custom Drive Extensions.



OPEN SOCKETS



LOW CLEARANCE HEX SOCKETS



ALLEN SOCKETS



LOW CLEARANCE ALLEN DRIVES



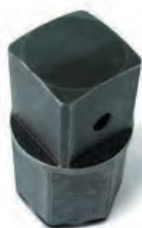
DIRECT DRIVE SOCKETS DIRECT DRIVE ALLENS

ACCESSORIES

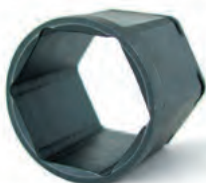
QUALITY YOU CAN RELY ON



EDGE ALLEN DRIVES



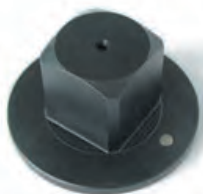
SQUARE DRIVE HEX ADAPTER



LOW CLEARANCE HEX INSERT



REACTION SLEEVE



SQUARE DRIVE REDUCER



STUD EXTRACTORS 1/2" UP TO 4"



FRL UNIT

Filter/Regulator/Lubricator.
Reduces 95% of operational noise.



AIR DRYER

Removes moisture from air lines. For
use on all air powered equipment.



SOCKETS, ADAPTERS & REDUCERS

Male and Female, Hex and Allen
Sockets. Hex-Adapters, Square Adapt-
ers, Standard and Custom-made.



INLINE BOLTING SYSTEMS

Adjustable Reaction fixtures.



SPECIALIZED REACTION FIXTURES

Track Pad and Crab Nut Fixtures



ADAPTERS & REDUCERS

Hex-Adapters, Square Adapters,
Standard and Custom-made.

SINGLE STAGE TENSIONERS

- Ideal for low overhead clearance applications
- Compact, single stage design for minimal installation height

BOLT DIAMETER		MAXIMUM LOAD		TENSIONER DIAMETER		TENSIONER HEIGHT		TENSIONER STROKE	
Imperial	Metric	lbf	kN	in	mm	in	mm	in	mm
1"	M24	65,192	290	3.35	85	3.86	98	0.31	8
1-1/8"	M27	84,300	375	3.58	91	4.09	104	0.31	8
1-1/8"	M30	103,408	460	3.86	98	4.21	107	0.31	8
1-1/4"	M33	128,136	570	4.29	109	4.53	115	0.31	8
1-3/8"	M36	150,616	670	4.49	114	4.65	118	0.31	8
1-1/2"	M39	179,840	800	5.04	128	4.88	124	0.39	10
1-5/8"	M42	206,816	920	5.20	132	5.20	132	0.39	10
1-3/4"	M45	242,784	1080	5.59	142	5.28	134	0.39	10
1-7/8"	M48	274,256	1220	5.94	151	5.43	138	0.39	10
2"	M52	325,960	1450	6.38	162	5.51	140	0.39	10
2-1/4"	M56	376,540	1675	6.73	171	5.91	150	0.39	10
2-1/2"	M64	494,560	2200	7.17	182	6.38	162	0.47	12



MULTI STAGE TENSIONERS

- Ideal for low radial clearance applications
- Multi stage design for easy installation into narrow apertures

BOLT DIAMETER		MAXIMUM LOAD		TENSIONER DIAMETER		TENSIONER HEIGHT		TENSIONER STROKE	
Imperial	Metric	lbf	kN	in	mm	in	mm	in	mm
1"	M24	64,742	288	2.36	60	7.40	185	0.28	7
1-1/8"	M27	84,300	375	2.60	66	7.62	193.5	0.28	7
1-1/8"	M30	103,858	462	2.83	72	7.91	201	0.28	7
1-1/4"	M33	128,586	572	3.07	78	8.50	216	0.31	8
1-3/8"	M36	150,616	670	3.25	82.5	9.04	229.5	0.39	10
1-1/2"	M39	180,290	802	3.62	92	10.31	263	0.39	10
1-5/8"	M42	206,928	920.5	3.86	98	10.31	262	0.39	10
1-3/4"	M45	243,234	1082	4.13	105	10.91	281.5	0.39	10
1-7/8"	M48	274,706	1222	4.37	111	11.56	293.5	0.39	10
2"	M52	326,410	1452	4.72	120	12.80	327	0.39	10
2-1/4"	M56	376,540	1675	5.04	128	12.99	330	0.39	10
2-1/2"	M64	494,560	2244	5.83	146	14.23	376	0.47	12



- Alternative specifications also available (designs up to 2500 bar and M160 previously supplied)
- Contact Boltight if your size or application requirement is not listed above!



HYDRAULIC BOLTING SYSTEMS



STEALTH® Hydraulic Torque Wrench

- Ultra-Slim design fits all jobs
- Dual-Piston for added speed
- FME-Compliant click-In link system
- HYTORC Washer/Nut-compatible
- Torque range: 278 to 34,722 ft-lbs (377-47076 Nm)



AVANTI® Hydraulic Torque Wrenches

- New uniswivel design for free movement
- Patented auto-release prevents lock-on
- Co-axial drive increases tool longevity
- HYTORC Washer/Nut-compatible
- Torque range: 115 to 138,510 ft-lbs (153-187794 Nm)



XLCT® Hydraulic Torque Wrench

- Most widely used LC tool in the industry
- Anti-Lockup system for quick release
- Available with square drive adapter
- One-way ratcheting
- Torque range: 243 to 59,110 ft-lbs (329-42011 Nm)



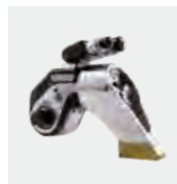
MXT Plus® Hydraulic Torque Wrench

- Most widely used SD tool in the industry
- Anti-Lockup system for quick release
- Wide selection of extensions and fixtures
- Reinforced unibody housing
- Torque range: 118 to 37,100 ft-lbs (160-50300 Nm)



VERSA® Hydraulic Torque Wrench

- 3-Moving-part system
- Reinforced unibody housing
- Slim design fits tight workspaces
- Wide selection of accessories
- Torque range: 150 to 36,200 ft-lbs (203-49080 Nm)



EDGE® Hydraulic Torque Wrench

- 3-Moving-part system
- Push-Through square drive
- Reinforced unibody housing
- Wide selection of accessories
- Torque range: 106 to 29,650 ft-lbs (143-40200 Nm)

PNEUMATIC BOLTING SYSTEMS



jGun® DIGITAL Single Speed Pneumatic Torque Tool

- Torque multiplier with a digital readout
- High-Speed and accurate torque
- Industry-Leading power-to-weight
- Built-In torque adjustment
- Torque range: 60 to 7,900 ft-lbs (81-10710 Nm)



jGun® DUAL SPEED Pneumatic Torque Tool

- High-Speed and accurate torque
- Industry-Leading power-to-weight
- HYTORC Washer/Nut-compatible
- Torque range: 194 to 8,285 ft-lbs (263-11232 Nm)

ELECTRIC BOLTING SYSTEMS



LITHIUM SERIES® Electric Torque Tool

- World's first 36V torque gun
- Industry-Leading battery life
- Industry-Leading power-to-weight
- HYTORC Washer/Nut-compatible
- Torque range: 150 to 3,000 ft-lbs (203-4067 Nm)



LION GUN® Electric Torque Tool

- Built-in data recording
- Brushless DC motor
- Industry-Leading power-to-weight
- HYTORC Washer/Nut-compatible
- Torque range: 25 to 700 ft-lbs (33-949 Nm)

HYTORC TENSIONERS



Topside Standard Series

- Strong, dependable tooling
- Wide range of sizing
- Customizable to any specification



Topside Spring Return

- Designed for long life
- Time and energy savings
- Customizable to any specification

*** When used with a Hytorc Washer system

*** When used with optional silencer system

HYTORC

WEST

1944 Lund Road • Bancroft Idaho 83217
Office: 208.648.0897 - Fax: 208.648.9970
www.hytorcwest.com