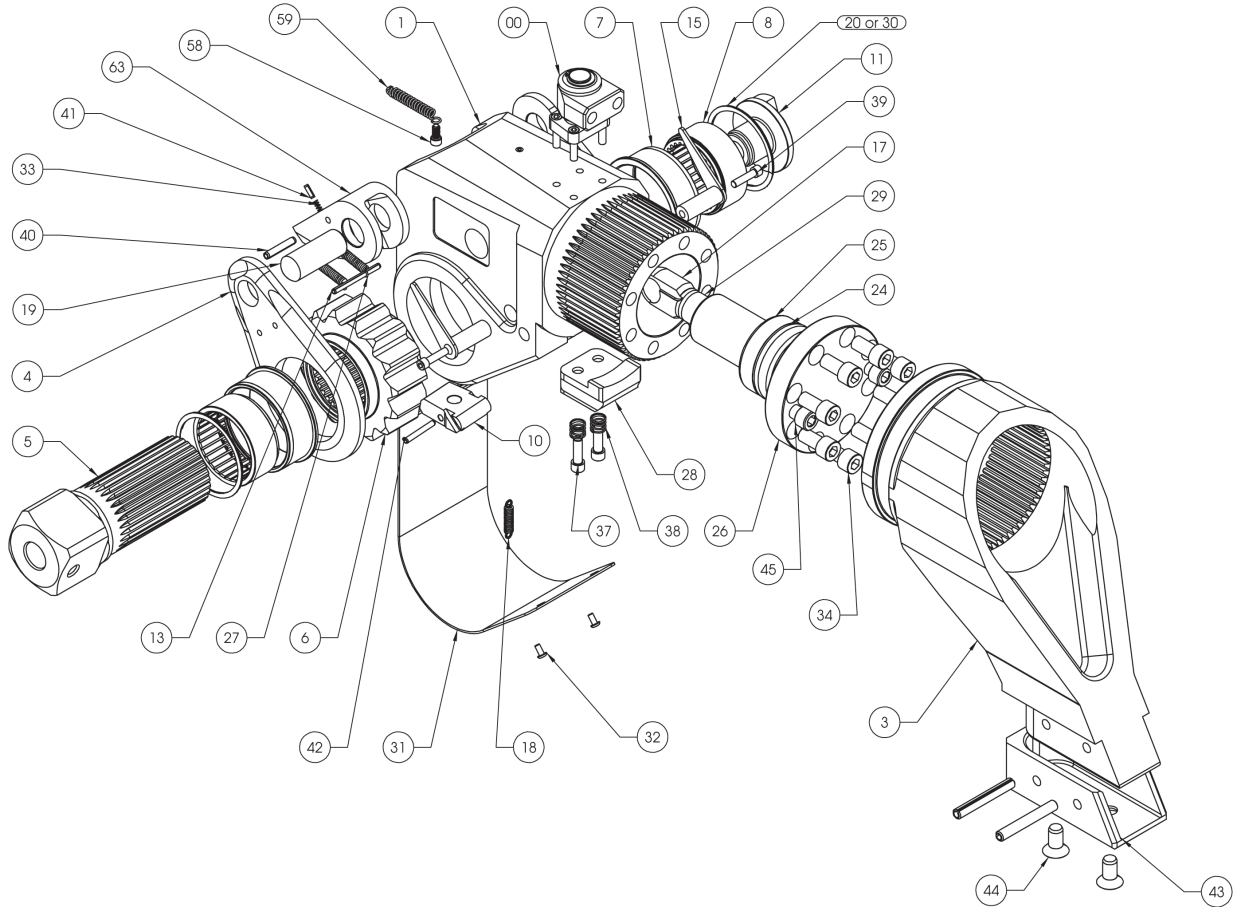


## APPENDIX A

# XLT TOOL PARTS LIST



ITEM	DESCRIPTION	HY-.5XLT	HY-5XLT	HY-8XLT	HY-25XLT	HY-50XLT
1*	Housing Complete	XLT-.5-01-E	XLT-05-01	XLT-08-01-E	XLT-25-01	XLT-25-01
3	Reaction Arm	XLT-5-03	XLT-05-03	XLT-08-03	XLT-25-03	XLT-25-03
4	Drive Plate Universal	XLT-.5-04	XLT-05-04	XLT-08-04	XLT-25-04	XLT-25-04
5	Square Drive Square Through	XLT-.5-05-A	XLT-05-05-A	N/A	N/A	N/A
5	Square Drive Spline	XLT-.5-05-1	XLT-05-05-1	XLT-08-05	XLT-25-05	XLT-25-05
6	Ratchet Square	XLT-5-06-A	XLT-05-06-A	N/A	N/A	N/A
6	Ratchet Spline	XLT-.5-06-1	XLT-05-06-1	XLT-08-06	XLT-25-06	XLT-25-06
7	Drive Bushing for Steel Sleeve	XLT.S-07-0	XLT-05-07-0	N/A	XLT-25-07-0	XLT-25-07-0
7	Drive Bushing for B/A Sleeve	XLT.S-07-1	XLT-05-07-1	XLT-08-07-1	XLT-25-07-1	XLT-25-07-1
8	Drive Sleeve Round Steel	XLT-5-08-0	XLT-05-08-0	N/A	XLT-25-08-0	XLT-25-08-0
8	Drive Sleeve Square BRJALU	XLT-.5-08-A	N/A	N/A	N/A	N/A
8	Drive Steel Spline BR/ALU	XLT-.5-08-1	XLT-05-08-1	XLT-08-08	XLT-25-08-1	XLT-25-08-1
10	Reaction Pawl	XLT-.5-10	XLT-05-10	XLT-08-10	XLT-25-10	XLT-25-10

Technical data and specifications are subject to change without notice.

# APPENDIX A

## **XLT TOOL PARTS LIST**

ITEM	DESCRIPTION	HY-5XLT	HY-8XLT	HY-25XLT	HY-50XLT
11	Drive Retainer	XLT-5-11	XLT-08-11	XLT-2511	XLT-2511
13	Drive Plate Roll Pin	XLT-5-13	XLT-08-13	XLT-25-13	XLT-25-13
15	Lever	XLT-5-15	XLT-08-15	XLT-25-15	XLT-25-15
17	Piston Connector Rod	XLT-5-17	XLT-08-17	XLT-25-17	XLT-25-17
18	Reaction Pawl Spring	XLT-5-18	XLT-08-18	XLT-25-18	XLT-25-18
19	Rod Pin	XLT-5-19	XLT-08-19	XLT-25-19	XLT-25-19
20	Drive Sleeve O-Ring	XLT-5-20	XLT-08-20	XLT-25-20	XLT-25-20
24	Piston Sleeve	XLT-5-24	XLT-08-24	XLT-25-24	XLT-25-24
25	Piston with Seals	XLT-5-25	XLT-08-25	XLT-25-25	XLT-25-25
26	End Cap with Screws	XLT-5-26	XLT-08-26	XLT-25-26	XLT-25-26
26	End Cap used w/E Style Housing Only	XLT-5-26-E	XLT-08-26-E	N/A	N/A
27	Spring, Drive Pawl (2)	XLT-5-27	XLT-08-27	XLT-25-27	XLT-25-27
28	Reaction Arm Clamp	XLT-5-28	XLT-08-28	XLT-25-28	XLT-25-28
29	Piston Rod	XLT-5-29	XLT-08-29	XLT-25-29	XLT-25-29
30	Retaining Ring	XLT-5-30	XLT-08-30	XLT-25-30	XLT-25-30
31-U	Shroud, Universal	XLT-5-31	XLT-08-31-U	XLT-25-31-U	XLT-25-31-U
32	Screw, Shroud	XLT-5-32	XLT-08-32	XLT-25-32	XLT-25-32
33	Spring, Secondary Drive Pawl	N/A	N/A	XLT-25-33	XLT-25-33
34	Screws, End Cap	XLT-5-34	XLT-08-34	XLT-25-34	XLT-25-34
37	Screw, RA Clamp	XLT-5-37	XLT-08-37	XLT-25-37	XLT-25-37
38	Spring, RA Clamp	XLT-5-38	XLT-08-38	XLT-25-33	XLT-25-33
39	Lever Screw	XLT-5-39	XLT-08-39	XLT-25-39	XLT-25-39
40	Roll Pin, Primary DP/Reaction Pawl	XLT-5-40	XLT-08-40	XLT-28-40	XLT-28-40
41	Roll Pin, Secondary DP	XLT-5-41	N/A	XLT-25-41	XLT-25-41
42	Roll Pin, Reaction Pawl	XLT-5-42	XLT-08-42	XLT-25-42	XLT-25-42
43	Reaction Ann Boost with Screws	XLT-5-43	N/A	XLT-25-43	XLT-25-43
44	Boot Screws	XLT-5-44	N/A	XLT-25-44	XLT-25-44
45	Screw, End Cap Jacking	XLT-5-45	XLT-08-45	XLT-25-45	XLT-25-45
58	Screws, Shroud Spring	XLT-5-58	XLT-08-58	XLT-25-58	XLT-25-58
59	Shroud Spring	XLT-5-59	XLT-08-59	XLT-25-59	XLT-25-59
**	Piston Rod Assembly	XLT-5-61	XLT-08-61	XLT-25-61	XLT-25-61
62	Seal Kit Universal	XLT-5-62	XLT-08-62	XLT-25-62	XLT-25-62
#+,+63	Drive Pawl Assembly Kit	XLT-5-63	XLT-08-63	XLT-25-63	XLT-25-63
#.64	Roll Pin Kit (all roll pins)	XLT-5-64	XLT-08-64	XLT-25-64	XLT-25-64
65	Reaction Arm Crane	N/A	XLT-08-03-C	N/A	N/A
#00	Uniswivel Assembly	XLT-001	XLT-003	XLT-003	XLT-003
#00	Uniswivel Seal Kit	XLT-0H10	XLT-001-00	XLT-001-00	XLT-001-00

\* E Series Housing includes 01-E, 07-1, 26-E and 31-U,32 ,58, and 59

\*\* Piston Rod Assembly includes 24,25 and 29.

++ Drive Pawl Assembly Kit includes parts 17, 19 & 27 on the XLT. 5, 8, & 25, Part 17 not included with XLT 1, 3, 5,10 & 20

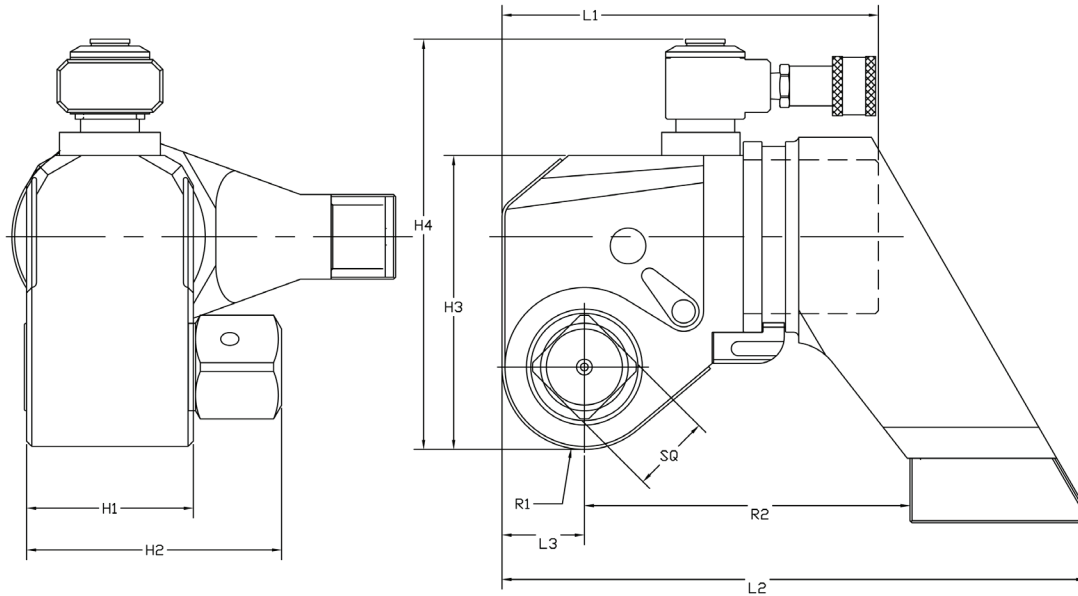
# Available only as an assembly.

*Technical data and specifications are subject to change without notice.*

APPENDIX B

# XLT DIMENSIONAL DATA

## IMPERIAL



	Inches						Lbs.		Ft. Lbs.	
	L1	L2	H1	H2	H3	H4	R1	R2	Weigh*	Max Torque
HY-.5XLT	3.00	4.91	1.32	1.88	3.00	4.25	0.65	2.57	1.85	397
HY-5XLT	7.10	11.11	3.15	4.49	5.80	7.70	1.56	6.15	16.75	5,590
HY-8XLT	7.70	12.57	3.57	5.09	6.50	8.50	1.76	6.96	24.95	8,000
HY-25XLT	11.80	18.52	5.25	7.48	9.60	11.50	2.60	10.25	68.5	25,890
HY-50XLT	15.50	22.99	6.57	9.36	11.00	12.80	3.25	12.82	124	52,500

	HY-.5XLT	HY-1XLT	HY-3XLT	HY-5XLT	HY-5XLT	HY-10XLT	HY-20XLT	HY-25XLT	HY-50XLT
Square Drive	½"	¾"	1"	1-½"	1-½"	1-½"	2-½"	2-½"	2-½"
Min. Torque (ft.lbs.)	55	200	480	835	1,200	1,755	2,960	3,960	7,875
Max. Torque (ft.lbs.)	397	1,340	3,230	5,590	8,000	11,520	19,760	25,890	52,500
Accuracy	± 3%	± 3%	± 3%	± 3%	± 3%	± 3%	± 3%	± 3%	± 3%
Swivel 360° x 180°	STANDARD								
Uni-Body Housing	TITAL399								
Click-On Reaction Arm	TITAL300, Vertical, 360°, Tension absorbing								

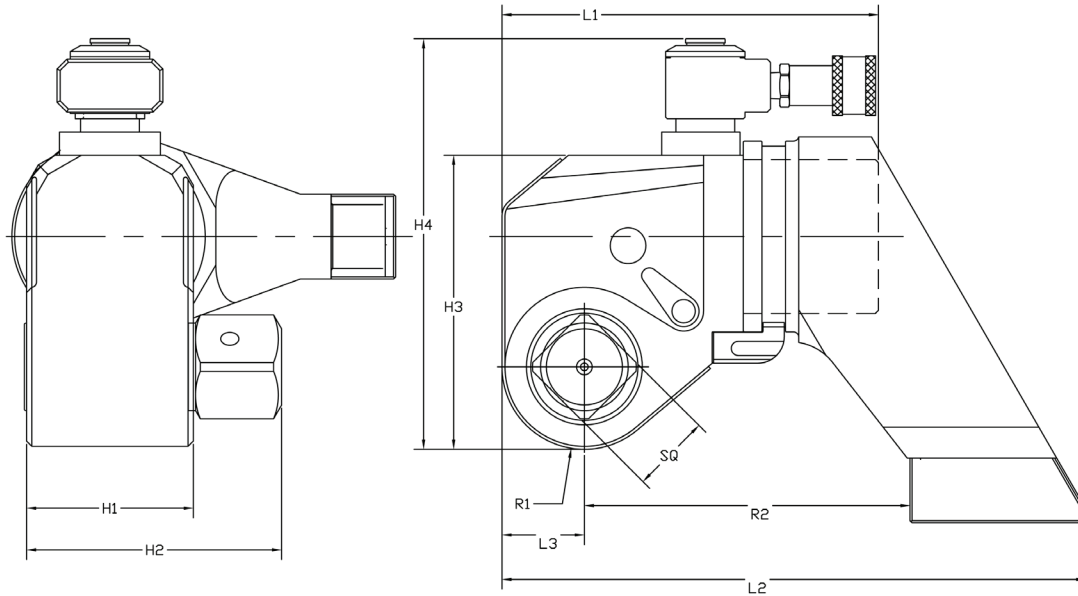
\*The weight listed is for the complete ready-to-use HYTORC tool with reaction arm.

*Technical data and specifications are subject to change without notice.*

APPENDIX B

# XLT DIMENSIONAL DATA

METRIC



	mm						Kg		Nm	
	L1	L2	H1	H2	H3	H4	R1	R2	Weigh*	Max Torque
HY-.5XLT	76.20	124.71	33.53	47.75	76.20	107.95	16.51	65.28	0.84	538
HY-5XLT	180.34	282.19	80.01	114.05	147.32	195.58	39.62	156.21	7.61	7,579
HY-8XLT	195.58	319.28	90.68	129.29	165.10	215.90	44.70	176.78	11.34	10,846
HY-25XLT	299.72	470.41	133.35	189.99	243.84	292.10	66.04	260.35	31.14	35,102
HY-50XLT	393.70	583.95	166.88	237.74	279.40	325.12	82.55	325.63	56.36	71,180

	HY-.5XLT	HY-1XLT	HY-3XLT	HY-5XLT	HY-5XLT	HY-10XLT	HY-20XLT	HY-25XLT	HY-50XLT
Square Drive	½"	¾"	1"	1-½"	1-½"	1-½"	2-½"	2-½"	2-½"
Min. Torque (Nm)	81	273	657	1,137	1,627	2,379	4,019	5,265	10,677
Max. Torque (Nm)	538	1,817	4,379	7,579	10,846	15,617	26,791	35,102	71,180
Accuracy	± 3%	± 3%	± 3%	± 3%	± 3%	± 3%	± 3%	± 3%	± 3%
Swivel 360° x 180°	STANDARD								
Uni-Body Housing	TITAL399								
Click-On Reaction Arm	TITAL300, Vertical, 360°, Tension absorbing								

\*The weight listed is for the complete ready-to-use HYTORC tool with reaction arm.

Technical data and specifications are subject to change without notice.