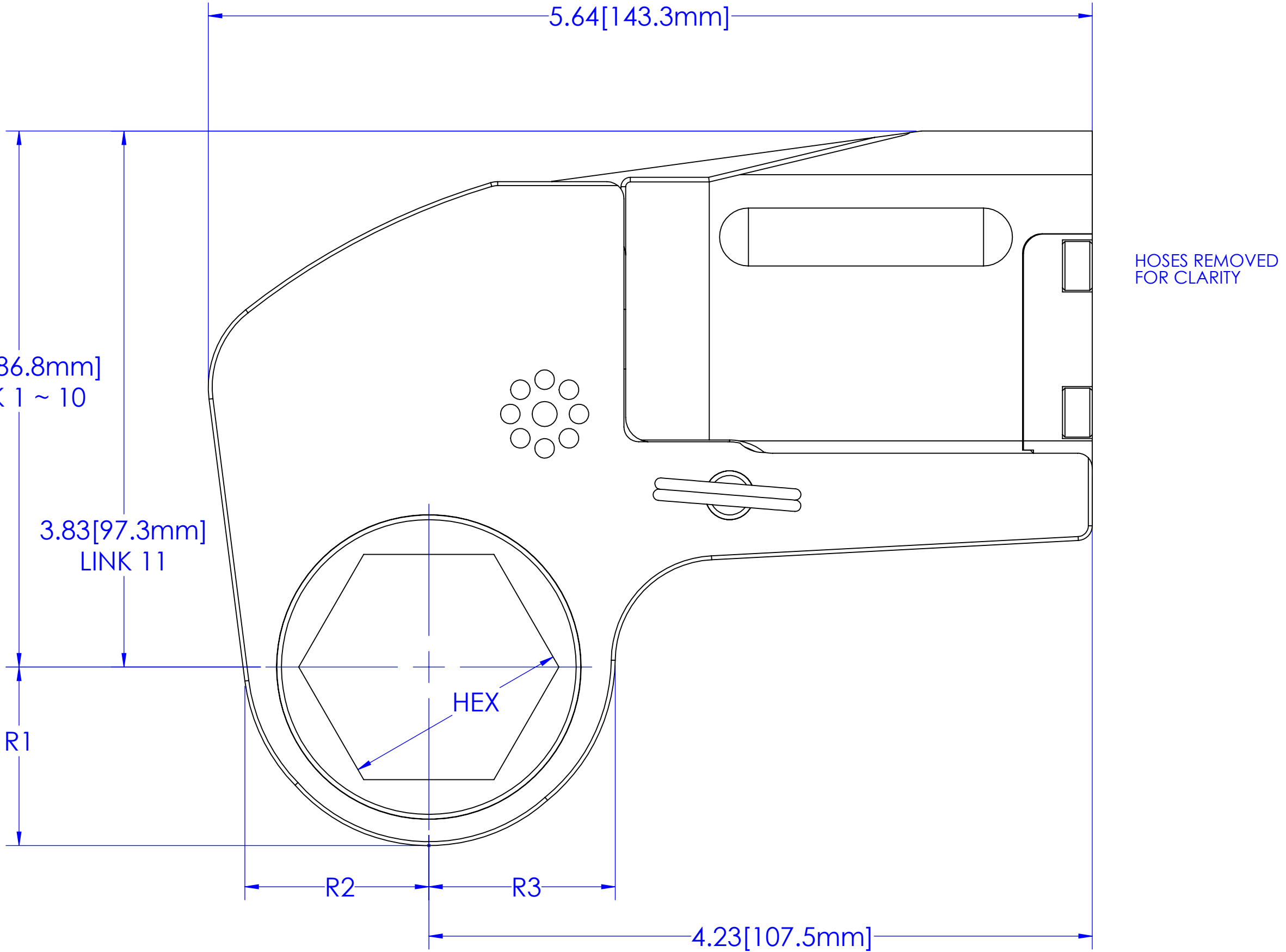
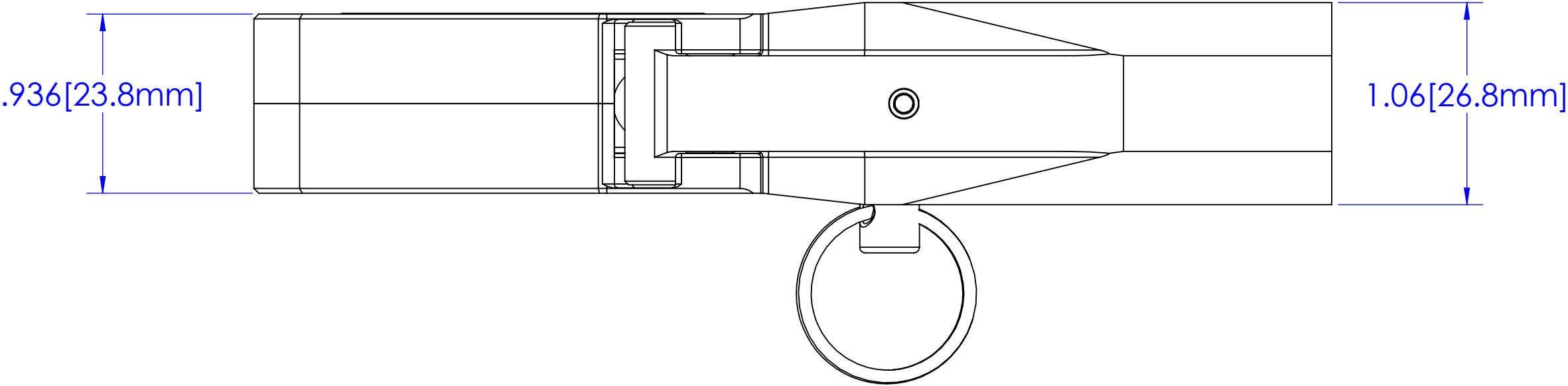


LINK #	MAX HEX SIZE	
	[in]	[mm]
1	3/4	19
2	1	24
3	1-1/16	27
4	1-3/16	30
5	1-1/4	32
6	1-3/8	34
7	1-7/16	36
8	1-1/2	38
9	1-5/8	41
10	1-13/16	46
OVERSIZED LINK, NON-STANDARD		
*11	2	50



REVISIONS			
REV.	DESCRIPTION	APP.	DATE
B	UPDATES HEX SIZE FOR LINK #1	CL	6/7/2016
C	ECN 1225 - 3/4", 19 MM HEX WAS 7/8", 22 MM	CL	10/12/2018



HOSES REMOVED FOR CLARITY

LINK #	R1		R2		R3	
	[in]	[mm]	[in]	[mm]	[in]	[mm]
1	0.76	19.3	0.75	19.1	0.81	20.6
2	0.85	21.6	0.85	21.6	0.90	22.9
3	0.89	22.6	0.89	22.6	0.94	23.9
4	0.97	24.6	0.99	25.1	0.98	24.9
5	1.01	25.7	1.03	26.2	1.01	25.7
6	1.09	27.7	1.12	28.4	1.09	27.7
7	1.14	29.0	1.17	29.7	1.19	30.2
8	1.19	30.2	1.23	31.2	1.23	31.2
9	1.27	32.3	1.32	33.5	1.32	33.5
10	1.36	34.5	1.41	35.8	1.41	35.8
OVERSIZED LINK, NON-STANDARD						
*11	1.48	37.6	1.53	38.9	1.54	39.1

© 2010 HYTORC, DIV. UNEX CORP.

TITLE: VERSA 1
DIMENSIONAL OUTLINE

HYTORC

Since 1968

DRAWN: CL

CHECKED:

DATE: 08/14/2014

APPROVED:

SIZE: C

DRAWING NUMBER:

REV: C

PROPRIETARY AND CONFIDENTIAL
This drawing is the property of the
UNEX Corporation and the information
thereon is to be treated as confidential.
It is not to be used, copied or
disclosed to outside parties without our
written consent.