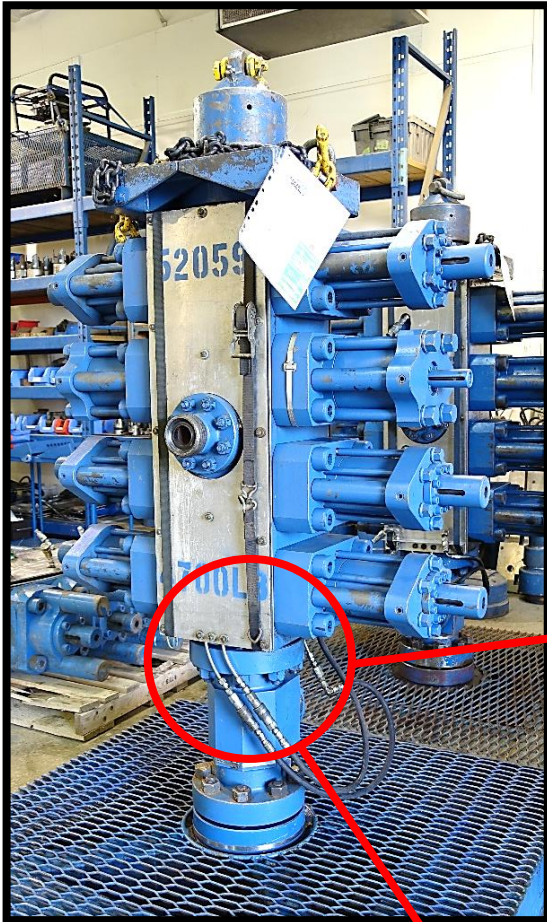


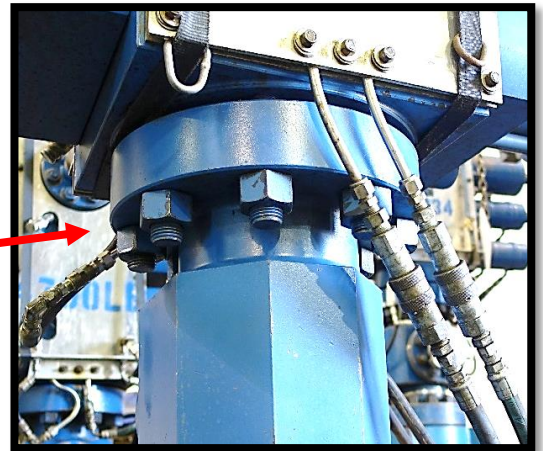
Versa-1 solution for 4" – 10K BOP



These are 1 1/8" studs (1 13/16" nuts).

Relatively low required torque, but the customer is dedicated (completely) to the elimination of hammer and manual torque wrenches.

They have a number of STEALTH-2 kits which fit and work fine on their all models and sizes except these units.



Below is a ST2-113 link showing the situation and how it does not come close to fitting.





In order to come up with a solution, I looked up the specifications / dimensions on the Versa-1.

It appeared that it could potentially take care of business, so we ordered one up from the factory to go and do a field check for application fit and function.

The Versa-1 fit onto this very limited access application and provides the solution the customer was looking for.

