



About HYTORC

HYTORC's mission is to optimize safety, quality and schedule in industrial bolting through innovative solutions, and an unyielding commitment to world class customer service.

Innovating Bolting Since 1968

HYTORC makes industrial bolting safer and simpler. With nearly 50 years of experience focused entirely on developing the highest quality industrial bolting systems, HYTORC is the most trusted name in the industry. From steel mills and mining equipment to refineries, power plants, and wind turbines; we have developed solutions for every bolting application imaginable. For custom projects, our highly experienced engineering team is at your service to design the most efficient solution for your job with simple operation and economical pricing in mind.

We are consistently improving upon existing products, and developing new tools, based on feedback from the people that use our tools every day. Our latest product line features patented industry-firsts like hands-free operation to keep tool operators at a safe distance from the application, onboard documentation systems to provide job accountability and assurance, and industry-leading bolt load accuracy to reduce nut loosening and joint failure.

With authorized repair facilities located all over the world, fast and professional service is always available. All of our products are covered by our worldwide industry-leading one year warranty coverage. Our latest bolting systems are guaranteed to stop leaks on pressurized vessels and eliminate unwanted nut loosening. Our mission is to make our customers' jobs as safe and hassle-free as possible.



Table of Contents

Product Selection

01 - Tool Comparison 06

02 - Pump Comparison..... 07

Hydraulic

03 - ICE..... 08

03.01 - Auto Release System

03.02 - Total-Freedom Uniswivel

03.03 - Multi-Use System

03.04 - Technical Data

04 - Avanti..... 10

04.01 - Reaction Drive

04.02 - Torque & Angle Dial

04.03 - Multi-Use System

04.04 - Technical Data

05 - MXT..... 12

05.01 - Lock-Up Release

05.02 - No-Slip Ratchet

05.03 - Special Alloy Option

05.04 - Technical Data

Hydraulic

| | |
|-------------------------------|----|
| 06 - Edge..... | 14 |
| 06.01 - Simple Operation | |
| 06.02 - Multi-Axis Swivel | |
| 06.03 - Push-Through Drive | |
| 06.04 - Technical Data | |
| 07 - Stealth..... | 16 |
| 07.01 - Hands-Free Operation | |
| 07.02 - Dual Piston Power | |
| 07.03 - Slim Design | |
| 07.04 - Technical Data | |
| 08 - XLCT..... | 18 |
| 08.01 - Lock-Up Release | |
| 08.02 - Zero-Slip Ratchet | |
| 08.03 - Multi-Use Accessories | |
| 08.04 - Technical Data | |
| 09 - Versa..... | 20 |
| 09.01 - Simple Operation | |
| 09.02 - Multi-Axis Swivel | |
| 09.03 - Slim Profile | |
| 09.04 - Technical Data | |

Notes

| | |
|-----------------|----|
| 10 - Notes..... | 22 |
|-----------------|----|

Tool Comparison



ICE **Avanti** **MXT** **EDGE** **Stealth** **XLCT** **Versa**
(PG. 10) (PG. 12) (PG. 14) (PG. 16) (PG. 18) (PG. 20) (PG. 22)

| | | | | | | | |
|------------------------------------|----|----|---|---|----|---|---|
| Multi-direction hose swivel | ✓ | ✓ | ✓ | ✓ | ✓ | ✓ | ✓ |
| Torque accuracy within 5% | ✓ | ✓ | ✓ | ✓ | ✓ | ✓ | ✓ |
| Torque output up to 35,000 ft-lbs | | ✓ | ✓ | ✓ | ✓ | ✓ | ✓ |
| Torque output beyond 35,000 ft-lbs | | ✓ | | | | ✓ | |
| Lock-on release | ✓ | ✓ | ✓ | | ✓ | ✓ | |
| Hands-free bolting | ✓* | ✓* | | | ✓ | | |
| Industry leading safety | ✓* | ✓* | | | ✓* | | |
| Industry leading load accuracy | ✓* | ✓* | | | ✓* | | |
| Auto pressure release | ✓ | | | | | | |
| Total freedom swivel | ✓ | | | | | | |



Digital **iGun** **iGun** **Flash** **Lithium** **LION**
iGun **Single Speed** **Dual Speed** **Gun** **Gun** **Gun**
(PG. 24) (PG. 26) (PG. 28) (PG. 30) (PG. 32) (PG. 34)

| | | | | | | |
|-----------------------------------|----|-----|-----|----|----|----|
| Industrial grade gearbox | ✓ | ✓ | ✓ | ✓ | ✓ | ✓ |
| Repeatability within 5% | ✓ | ✓ | ✓ | ✓ | ✓ | ✓ |
| Torque output up to 3,000 ft-lbs | | ✓ | ✓ | ✓ | ✓ | |
| Torque output beyond 3,000 ft-lbs | ✓ | ✓ | ✓ | ✓ | | |
| Industry leading safety | ✓* | ✓* | ✓* | ✓* | ✓* | ✓* |
| Industry leading accuracy | ✓* | ✓* | ✓* | ✓* | ✓* | ✓* |
| Dual speed rundown/torque | | | ✓ | ✓ | ✓ | |
| Onboard tool readout | ✓ | | | ✓ | ✓ | ✓ |
| Lock-on release | | | | ✓ | ✓ | ✓ |
| Built-in job documentation | | | | ✓ | ✓ | ✓ |
| Wireless/hoseless operation | | | | | ✓ | ✓ |
| Built-in cycle counter | ✓ | | | ✓ | ✓ | ✓ |
| Operation below 75dB | ✓ | ✓** | ✓** | ✓ | ✓ | ✓ |

* When used with a hystorc washer system

** When used with optional silencer system

Pump Comparison

tool selection



Vector
(PG. 40)



HY-115/230/380-460V
(PG. 41)



HY-AIR
(PG. 42)

| | | | |
|---------------------------|---------------------------|---------------------------|------------------------|
| Voltage | 115V / 230V / 400V | 115V / 230V / 400V | |
| Air Consumption | | | 3800 cu.in/sec |
| Data Recording | YES | NO | NO |
| Guage | N/A | 0-10K PSI (+/-1% Acc.) | 0-10K PSI (+/-1% Acc.) |
| Reservoir Capacity | 2 gal. | 1.35 gal. | 2 gal. |
| Stages | 3 | 3 | 3 |
| Max Flow Rate | | 620 cu. in/min | 770 cu. in/min |
| Weight | 79 lbs | 57 lbs | 46.3 lbs |
| Amperage | 18 AMP(115V) 9 AMP (230V) | 15 AMP(115V) 7 AMP (230V) | |



BigJet 18-400
(PG. 43)



JetPro-S 115/230
(PG. 44)



HY-TWIN AIR
(PG. 45)



JetPro-S AIR
(PG. 46)

| | | | | |
|---------------------------|-----------------|---------------------------|-----------------|----------------|
| Voltage | 380 - 460V | 115V / 230V | | |
| Air Consumption | | | 7200 cu.in/sec | 1900 cu.in/sec |
| Data Recording | NO | NO | NO | NO |
| Guage (+/-1% Acc.) | 0-10K PSI | 0-10K PSI | 0-10K PSI | 0-10K PSI |
| Reservoir Capacity | 2 gal. | 0.8 gal. | 5 gal. | 0.8 gal. |
| Stages | 3 | 2 | 3 | 2 |
| Max Flow Rate | 1070 cu. in/min | 310 cu. in/min | 1500 cu. in/min | 370 cu. in/min |
| Weight | 64 lbs | 33 lbs | 98 lbs | 35 lbs |
| Amperage | 6 AMP | 12 AMP(115V) 6 AMP (230V) | | |



ICE

Square Drive Tool

The ICE bolting system is the culmination of nearly 50 years of research and development dedicated to industrial bolting. Featuring patented industry-first innovations, the ICE is the most advanced hydraulic bolting system available today.

Auto Release System

03.01



The ICE can automatically release itself when locked on a bolt. This reduces unplanned interruptions in the bolting process.

Total-Freedom Uniswivel

03.02



The ICE is the world's only hydraulic bolting system that allows for fast and flexible positioning without the constraints normally associated with hydraulic hoses.

Multi-Use System

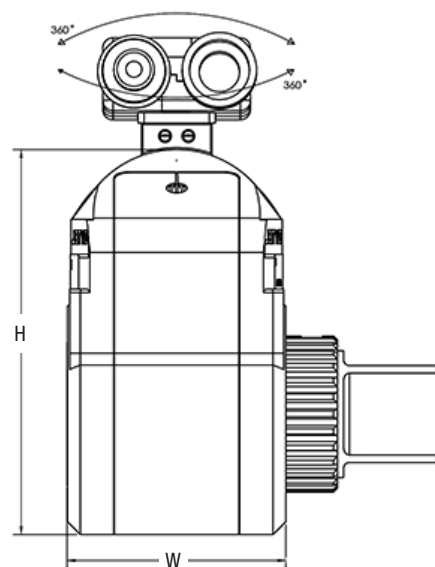
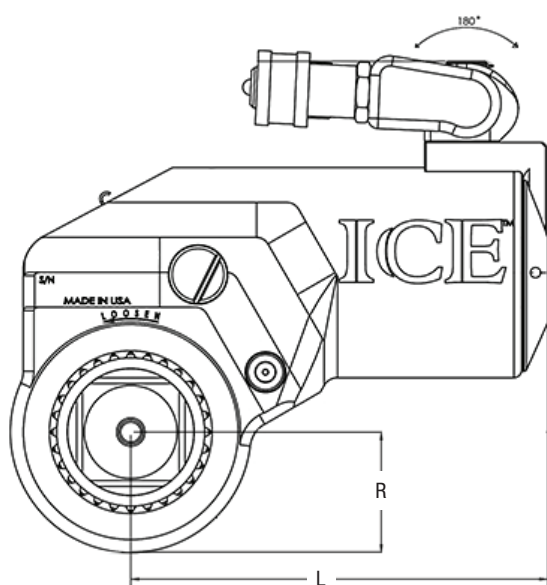
03.03



The ICE works with all HYTORC bolting systems including tensioning with the HYTORC Nut and the revolutionary new HYTORC Washer.

Technical Data

03.04





Avanti

Square Drive Tool

The Avanti series offers the widest range of torque output with a maximum output of more than 130,000 ft-lbs in the largest model. With tens of thousands in use around the world, the Avanti series is the industry's trusted solution for next-generation bolting.

Reaction Drive

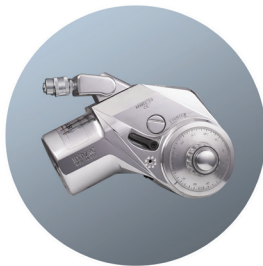
04.01



The Avanti features a patented industry-first reaction drive that eliminates the destructive twisting force that occurs in other torque wrenches that have a co-axial reaction arm. (* Also found on ICE series)

Torque & Angle Dial

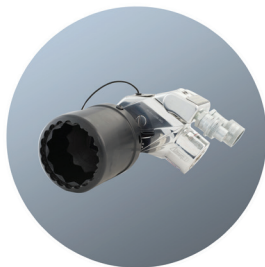
04.02



With a simple add-on, the Avanti system is capable of providing a clear angle reading for bolting methods that incorporate turn of the nut.

Multi-Use System

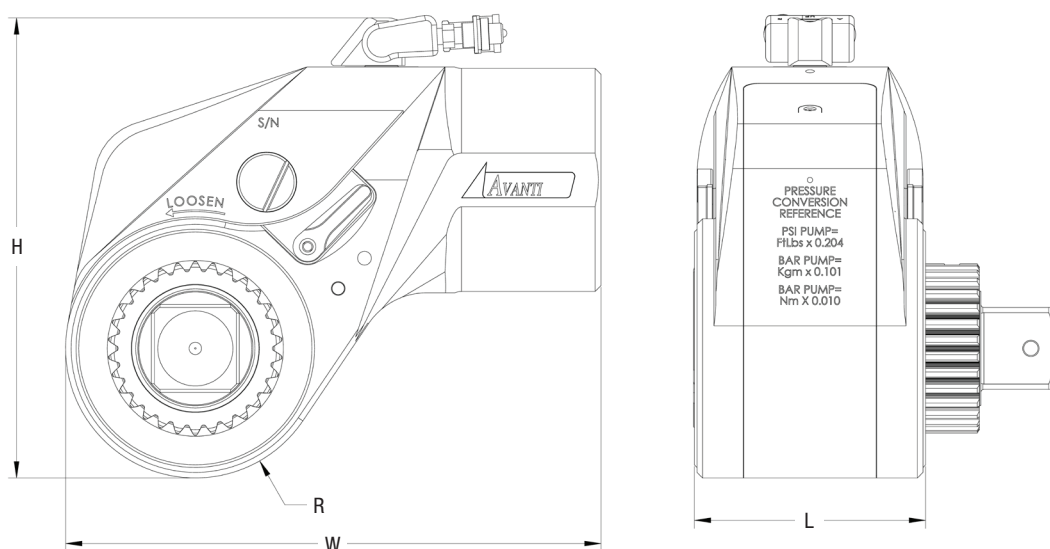
04.03



The Avanti works with all HYTORC bolting systems including tensioning with the HYTORC Nut and the revolutionary new HYTORC Washer for added safety, speed and accuracy on any job.

Technical Data

04.04



| Model | H (Inch) | W (Inch) | L (Inch) | R (Inch) | Drive (Inch) | Weight (Lbs) | Torque (ft-lbs) | |
|--------------|-------------|-------------|-------------|-------------|-----------------|-----------------|--------------------|---------|
| | | | | | | | MIN. | MAX. |
| Avanti - .7 | 4.19 | 1.79 | 4.14 | 0.99 | 3/4 | 3.10 | 115 | 767 |
| Avanti - 1 | 4.76 | 2.18 | 4.71 | 1.13 | 3/4 | 4.50 | 196 | 1,284 |
| Avanti - 3 | 6.20 | 2.90 | 6.15 | 1.52 | 1 | 9.45 | 460 | 3,084 |
| Avanti - 5 | 7.14 | 3.38 | 7.36 | 1.80 | 1 1/2 | 15.60 | 804 | 5,360 |
| Avanti - 8 | 7.90 | 3.86 | 8.24 | 1.94 | 1 1/2 | 20.75 | 1,150 | 7,760 |
| Avanti - 10 | 8.85 | 4.35 | 9.20 | 2.25 | 1 1/2 | 29.20 | 1,800 | 11,743 |
| Avanti - 20 | 10.22 | 5.07 | 10.94 | 2.60 | 2 1/2 | 47.70 | 2,760 | 17,890 |
| Avanti - 35 | 12.22 | 6.23 | 13.45 | 3.19 | 2 1/2 | 82.75 | 4,905 | 31,830 |
| Avanti - 50 | 13.90 | 7.04 | 15.54 | 3.95 | 2 1/2 | 127.70 | 7,202 | 46,126 |
| Avanti - 80 | 16.84 | 7.49 | 19.52 | 4.69 | 3 1/2 | 280.50 | 11,965 | 85,695 |
| Avanti - 130 | 19.40 | 8.50 | 22.73 | 5.31 | 3 1/2 | 585.00 | 19,395 | 138,510 |



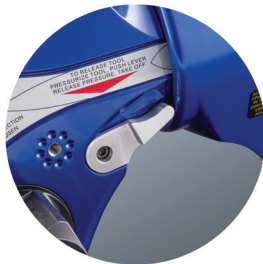
MXT

Square Drive Tool

The MXT is the world's best-selling industrial bolting system with over one hundred thousand in use around the world. Since 1990, the signature blue housing has represented quality, durability and reliability on job sites in every major industry. From the tallest roller coasters to the world's largest bridges, the MXT has the power to get the job done.

Lock-Up Release

05.01



The MXT was the first tool in the industry to feature a release lever that allows you to release the tool if it locks on the application. (Also found on Avanti series)

No-Slip Ratchet

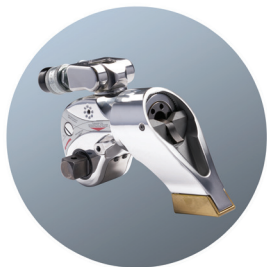
05.02



The MXT series pioneered this new system for more powerful breakout and faster tightening. The secondary pawl inside the tool prevents the ratchet from turning opposite of the direction it is being driven.

Special Alloy Option

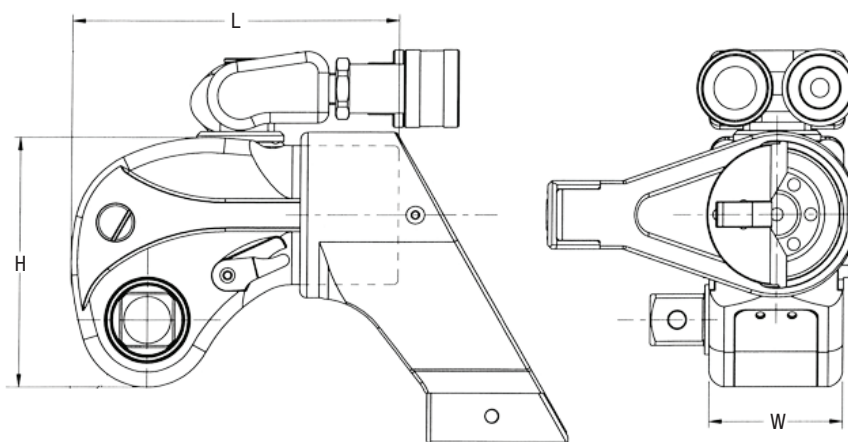
05.03



The MXT-SA series provides the proven reliability of the MXT design with advanced materials used to increase lifespan further for extreme usage. The MXT-SA tools come with a 5 year no-questions warranty.

Technical Data

05.04



| Model | H (Inch) | W (Inch) | L (Inch) | Drive (Inch) | Weight (Lbs) | Torque (ft-lbs) | |
|----------|-------------|-------------|-------------|-----------------|-----------------|--------------------|--------|
| | | | | | | MIN. | MAX. |
| MXT - .7 | 4.25 | 1.62 | 3.96 | $\frac{3}{4}$ | 2.70 | 118 | 822 |
| MXT - 1 | 4.90 | 1.97 | 4.88 | $\frac{3}{4}$ | 3.95 | 200 | 1,340 |
| MXT - 3 | 6.12 | 2.63 | 6.34 | 1 | 8.30 | 480 | 3,230 |
| MXT - 5 | 7.22 | 3.16 | 7.61 | $1\frac{1}{2}$ | 14.20 | 835 | 5,590 |
| MXT - 10 | 8.80 | 3.95 | 9.51 | $1\frac{1}{2}$ | 24.80 | 1,755 | 11,520 |
| MXT - 15 | 9.67 | 4.38 | 10.55 | $2\frac{1}{2}$ | 36.00 | 2,268 | 15,399 |
| MXT - 20 | 10.24 | 4.73 | 11.41 | $2\frac{1}{2}$ | 43.40 | 2,960 | 19,760 |
| MXT - 35 | 12.42 | 5.82 | 14.03 | $2\frac{1}{2}$ | 77.45 | 5,400 | 37,100 |



EDGE

Square Drive Tool

For general maintenance that requires high torque values and repeatable results, the Edge is HYTORC's workhorse. The straightforward three-moving-part design was created by HYTORC over 30 years ago and has been consistently improved upon resulting in the most tried and tested line of hydraulic torque wrenches in the world.

Simple operation

06.01



The three-moving part design of the Edge series reduces the number of potential repairs and keeps operating costs to a minimum.

Multi-Axis Swivel

06.02



The multi-axis swivel is used on all HYTORC hydraulic torque wrenches (with the exception of the ICE series) for maximum positioning flexibility and safety.

Push-Through Drive

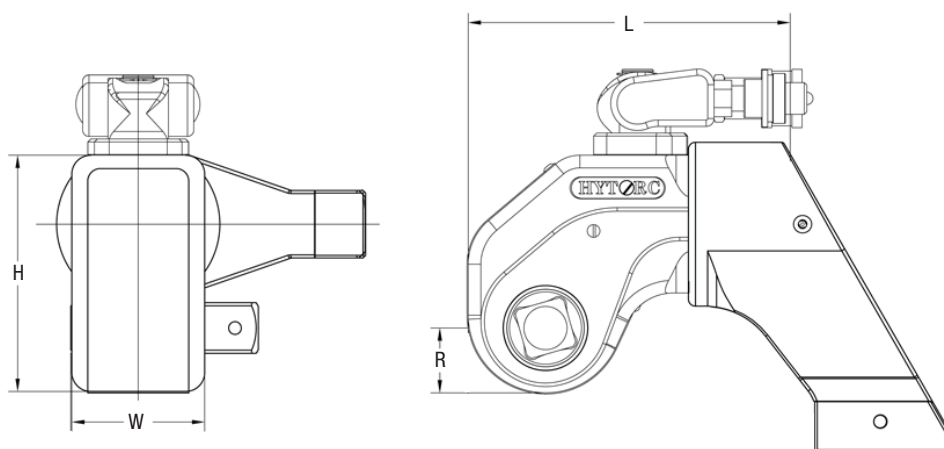
06.03



For quick and simple directional changes and maximum durability, the Edge series features a push through square drive.

Technical Data

06.04



| Model | H (Inch) | W (Inch) | L (Inch) | R (Inch) | Drive (Inch) | Weight (Lbs) | Torque (ft-lbs) | |
|-----------|-------------|-------------|-------------|-------------|-----------------|-----------------|--------------------|--------|
| | | | | | | | MIN. | MAX. |
| EDGE - .5 | 2.95 | 1.64 | 4.01 | 0.82 | $\frac{3}{4}$ | 3.30 | 106 | 710 |
| EDGE - 2 | 3.53 | 1.97 | 4.94 | 0.97 | $\frac{3}{4}$ | 4.05 | 178 | 1,257 |
| EDGE - 4 | 4.71 | 2.63 | 6.40 | 1.31 | 1 | 8.50 | 443 | 3,079 |
| EDGE - 6 | 6.04 | 3.18 | 7.61 | 1.57 | $1\frac{1}{2}$ | 19.20 | 893 | 6,241 |
| EDGE - 8 | 6.57 | 3.57 | 8.69 | 1.86 | $1\frac{1}{2}$ | 20.05 | 1,230 | 8,555 |
| EDGE - 12 | 7.07 | 3.95 | 9.60 | 1.96 | $1\frac{1}{2}$ | 25.00 | 1,615 | 11,291 |
| EDGE - 30 | 10.10 | 5.64 | 13.71 | 2.79 | $2\frac{1}{2}$ | 64.70 | 4,448 | 29,650 |



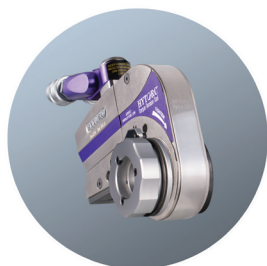
Stealth

Low Clearance Tool

The Stealth series is the industry's most advanced limited clearance hydraulic bolting system. The slim design fits where other tools will not and the dual piston power head provides unparalleled speed and power. Also compatible with the HYTORC Washer and HYTORC Nut, the Stealth series can conquer bolting applications from general maintenance to critical pathways.

Hands-Free Operation

07.01



For the highest level of safety on industrial bolting jobs, HYTORC recommends hands-free operation. The Stealth Lock-On adapter allows for hands-free usage with or without the HYTORC Washer.

Dual Piston Power

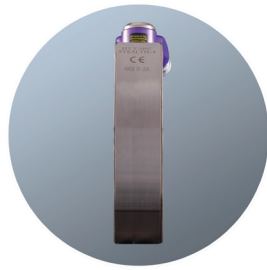
07.02



The patented design of the Stealth's dual pistons provides more speed than any other limited clearance tool in the market.

Slim Design

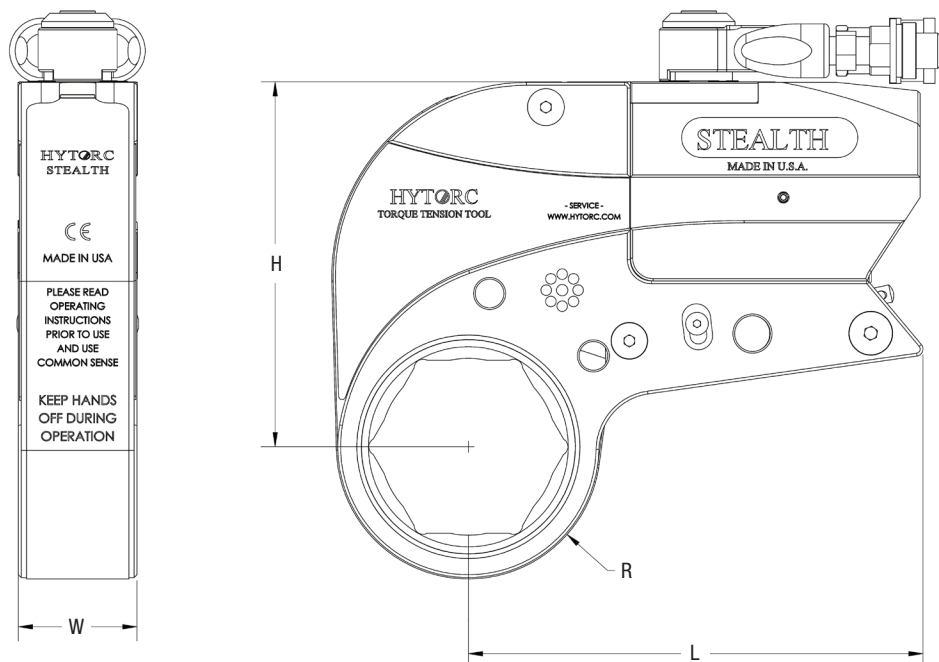
07.03



The Stealth was the first industrial bolting system in the market to feature a continuous slim body design that fits in even the tightest confines.

Technical Data

07.04



| Model | H (Inch) | W (Inch) | L (Inch) | R (Inch) | Weight (Lbs) | Torque (ft-lbs) | |
|--------------|-------------|-------------|-------------|--------------|-----------------|--------------------|--------|
| | | | | | | MIN. | MAX. |
| Stealth - 2 | 4.21 | 1.25 | 5.53 | 1.03 to 1.76 | 4.00 | 278 | 1,869 |
| Stealth - 4 | 5.43 | 1.66 | 6.56 | 1.33 to 2.32 | 4.30 | 604 | 4,020 |
| Stealth - 8 | 6.40 | 2.18 | 8.00 | 1.77 to 2.89 | 6.70 | 1,199 | 7,984 |
| Stealth - 14 | 7.94 | 2.50 | 9.35 | 2.32 to 3.47 | 10.40 | 2,105 | 14,255 |
| Stealth - 22 | 9.18 | 2.91 | 10.80 | 2.62 to 3.87 | 15.40 | 3,250 | 21,875 |
| Stealth - 36 | 10.81 | 3.41 | 12.71 | 3.07 to 4.80 | 24.10 | 4,917 | 34,722 |



XLCT

Low Clearance Tool

HYTORC's low clearance workhorse. Since 1992, the signature red housing has represented quality, durability and reliability on job sites in every major industry. From the tallest roller coasters to the world's largest bridges, the XLCT has the power to get the job done.

Lock-Up Release

08.01



Like the MXT, the XLCT features a release lever that allows you to release the tool after torquing for easy removal. (Also found on Stealth limited-clearance series)

Zero-Slip Ratchet

08.02



The XLCT series features a Zero-Slip ratchet for more powerful breakout and faster tightening. The secondary pawl inside the tool prevents the ratchet from turning opposite of the direction it is being driven.

Multi-Use Accessories

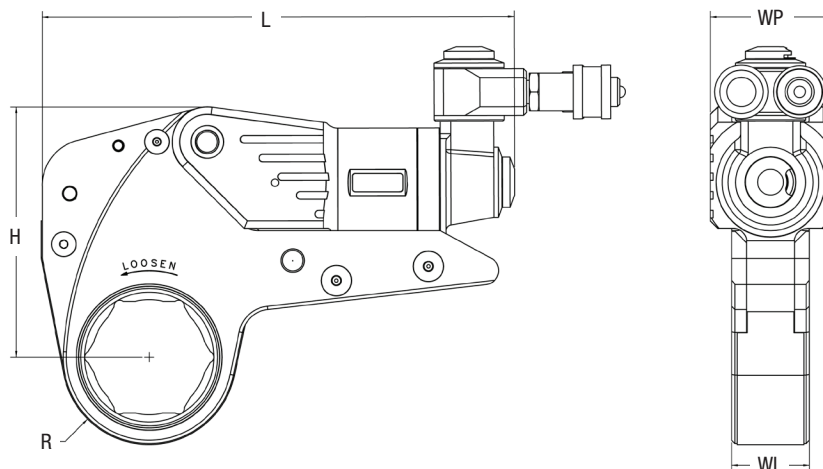
08.03



The XLCT series is available with interchangeable cartridges for 6-point hex, 12-point hex, allen drives, square drives, open spanners and many other configurations to simplify the most challenging bolting jobs.

Technical Data

08.04



| Model | H (Inch) | WP (Inch) | WL (Inch) | L (Inch) | R (Inch) | Weight (Lbs) | Torque (ft-lbs) | |
|-----------|-------------|--------------|--------------|-------------|--------------|-----------------|--------------------|--------|
| | | | | | | | MIN. | MAX. |
| XLCT - 2 | 4.02 | 2.00 | 1.25 | 7.33 | 1.03 to 1.76 | 2.05 | 243 | 1,687 |
| XLCT - 4 | 5.36 | 2.58 | 1.67 | 10.19 | 1.33 to 2.32 | 4.25 | 580 | 3,855 |
| XLCT - 8 | 6.70 | 3.23 | 2.09 | 12.29 | 1.77 to 2.89 | 7.15 | 1,143 | 8,151 |
| XLCT - 14 | 8.04 | 3.88 | 2.50 | 14.61 | 2.32 to 3.47 | 11.30 | 2,010 | 13,400 |
| XLCT - 18 | 9.08 | 4.38 | 2.83 | 14.34 | 2.62 to 3.87 | 14.85 | 2,790 | 19,100 |
| XLCT - 30 | 10.71 | 5.17 | 3.35 | 16.82 | 3.07 to 4.80 | 23.80 | 4,579 | 30,986 |



Versa

Low Clearance Tool

For general maintenance that requires high torque values and repeatable results, the Versa is HYTORC's workhorse. The straightforward three-moving-part design was created by HYTORC over 30 years ago and has been consistently improved upon resulting in the most tried and tested line of hydraulic torque wrenches in the world.

Simple Operation

09.01



The three-moving part design of the Versa series reduces the number of potential repairs and keeps operating costs to a minimum.

Multi-Axis Swivel

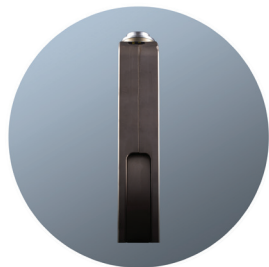
09.02



The multi-axis swivel is used on all HYTORC hydraulic torque wrenches (with the exception of the ICE series) for maximum positioning flexibility and safety. (Also found on Stealth limited-clearance series)

Slim Profile

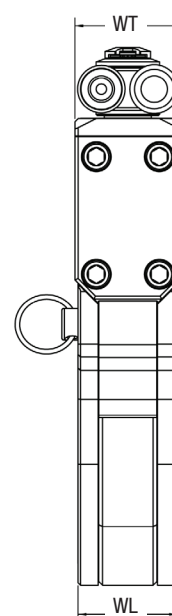
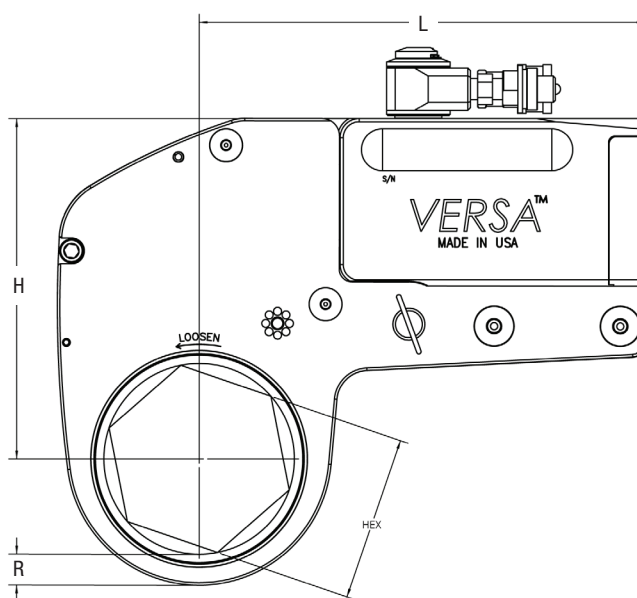
09.03



The Versa is the most economical solution with a continuous-profile design throughout the powerhead and hex link.

Technical Data

09.04



| Model | H (Inch) | WL (Inch) | WT (Inch) | L (Inch) | R (Inch) | Weight (Lbs) | Torque (ft-lbs) | |
|------------|-------------|--------------|--------------|-------------|-------------|-----------------|--------------------|--------|
| | | | | | | | MIN. | MAX. |
| Versa - 1 | 3.42 | .936 | 1.06 | 4.23 | 0.32 | 2.80 | 150 | 1,050 |
| Versa - 2 | 3.73 | 1.13 | 1.25 | 5.35 | 0.38 | 3.40 | 261 | 1,920 |
| Versa - 4 | 5.52 | 1.51 | 1.67 | 7.07 | 0.51 | 7.30 | 654 | 4,503 |
| Versa - 8 | 6.53 | 1.89 | 2.10 | 8.60 | 0.64 | 11.60 | 1,350 | 9,000 |
| Versa - 14 | 8.03 | 2.36 | 2.50 | 10.52 | 0.73 | 19.20 | 2,148 | 14,832 |
| Versa - 20 | 8.87 | 2.89 | 3.00 | 10.93 | 0.92 | 24.50 | 3,088 | 21,458 |
| Versa - 30 | 10.95 | 3.00 | 3.75 | 13.89 | 1.00 | 39.30 | 5100 | 36,200 |

HYTORC WORLD HEADQUARTERS

MAHWAH, NJ, +1-201-512-9500

WORLDWIDE LOCATIONS

ADVANCED BOLTING SOLUTIONS P. LTD

NAVI MUMBAI, INDIA, +91-22-4171-4444

HYTORC BRAZIL

RIO DE JANEIRO, BR, +55-21-2621-1911

HYTORC OF CHINA

SHANGHAI, +86-21-6254-0813

HYTORC MIDDLE EAST

UAE, +44-7436-549468

HYTORC CENTRAL EUROPE & RUSSIA

PERCHTOLDS DORF, AU, +43-1-86-51-368

HYTORC JAPAN

SUGINAMI-KU, TYO, +81-3-3314-3315

HYTORC UK

CRAMLINGTON, NB, +44-1-670-363800

HYTORC OF KOREA

KYUNGGI-DO, +82-31-708-0850

HYTORC AUSTRALIA

ADELAIDE, SOUTH AUSTRALIA, +61-8-8293-8411

HYTORC SOUTH AFRICA

MOUNT EDGEcombe, DUR, +27-(0)315023119

HYTORC SINGAPORE

SINGAPORE, +65-689-789-95

HYTORC LATIN AMERICA

MARIA DE LA PIEDAD, CTZ, +52-921-21-52760

**HYTORC has representatives in every area of
the world. To find your nearest location visit:**

hytorc.com/world

E: info@hytorc.com

P: +1-201-512-9500